



921 Corporate Way, Fremont, CA 94539  
Tel: +1-510 490-8024 Fax: +1-510-623-7268  
Web: <http://www.actisys.com> E-mail: [irda-info@actisys.com](mailto:irda-info@actisys.com)

***ACT-IR8250P***

***IrDA<sup>®</sup> Compliant Protocol Processor***

***Technical Specification***

**March 31, 2008**  
**Version 0.4.5.1**

**© Copyright 2003-2008 ACTiSYS Corporation,  
All Rights Reserved**

## TABLE OF CONTENTS

REVISION HISTORY.....	3
1. FEATURES.....	4
2. OVERVIEW .....	6
3. PINS DESCRIPTION.....	7
4. DEVICE OPERATION .....	8
4.1. RESET Circuit.....	8
4.2. Crystal Circuit .....	8
4.3. Host Interface .....	8
4.4. IR Port Interface .....	9
4.5. Operating Modes .....	9
5. IrDA PROTOCOLS SUPPORTED .....	10
6. ACT-IR8250P PARTS ID AND FIRMWARE NUMBER SYSTEM .....	10
7. CONNECT ACT-IR8250P TO A HOST DEVICE WITH RS232 PORT .....	11
8. IMPLEMENTATION NOTICE.....	12
8.1. Power supply .....	12
8.2. Crystal Oscillator.....	12
8.3. Reset .....	12
8.4. IrDA Transceiver .....	12
9. IN-SYSTEM PROGRAMMING IN ACT-IR8250P .....	13
10. ACT-IR8250P EVALUATION KIT (ACT-IR8250PEK AND ACT-IR8250PEKK)..	14
10.1. ACT-IR8250PEK PCB Photos And Dimensions: .....	15
10.2. ACT-IR8250PEK Circuit Schematics: .....	17
11. CHARACTERISTICS AND SPECIFICATION .....	19
11.1. Absolute maximum ratings ☆ .....	19
11.2. Recommended operating conditions: .....	19
12. APPLICATION CIRCUIT.....	20
13. PACKAGE DIMENSIONS .....	21
13.1. SOP28.....	21
13.2. TSSOP28 .....	22
APPENDIX 1. HOW TO USE ACT-IR8250PEK (ACT-IR8250P EVALUATION KIT)	23
14. WARRANTY INFORMATION .....	25
15. CONTACT INFORMATION .....	26

## REVISION HISTORY

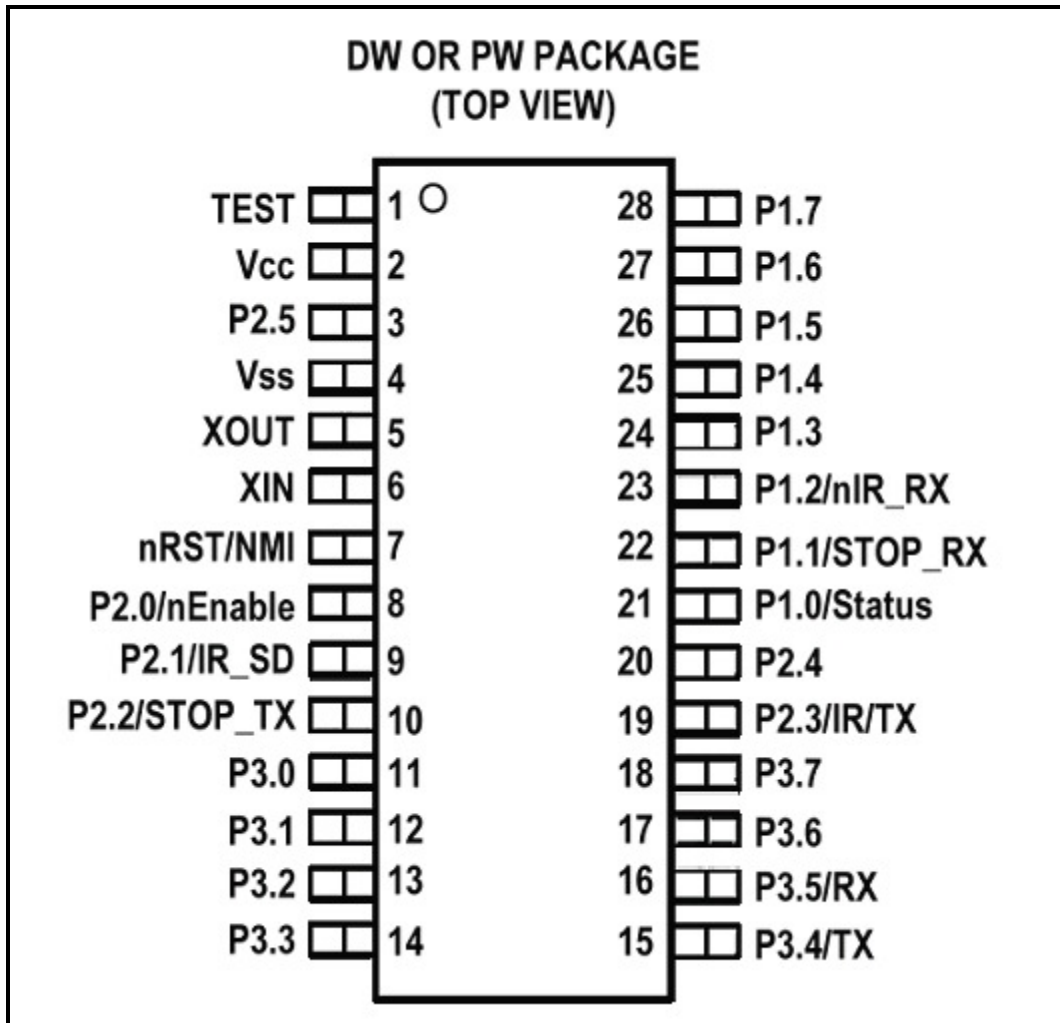
Revision History		
Revision	Date	Comment
0.1	08/21/2003	Preliminary Design Specification
0.2	08/26/2003	Removed Chapter 5 and added Appendix 1
0.3	12/08/2003	Updated reference circuit & IrDA transceiver model #. Updated implementation examples. Added Eval. Kit PCB dimensions and circuit schematics.
0.31	12/19/2003	Updated reference circuit in more detail.
0.4	01/12/2004	Revised Appendix 1 for Development Kit.
0.41	03/31/2004	Revised IR8250SW statement in Appendix 1.
0.42	04/23/2004	Added In-system programming in chapter 9.
0.43	11/22/2004	Added connector of DB dimension on section 10.1.
0.44	01/28/2005	Added IR8250PEK-J1 connector detail on Chapter 10 & 12
0.4.5	04/13/2007	Changed document name to Technical Spec; added logo for WEEE & Chinese RoHS under Warranty Chap
0.4.5.1	3/31/2008	Updated Corporate Address

ACTiSYS reserves the right to make changes without further notice to any products herein to improve reliability, function or design. ACTiSYS does not assume any liability arising out of the application or use of any product or circuit described herein.

**All trademarks, logos, organizations or company names and product model names are the properties of the respective organizations or companies.**

## 1. FEATURES

- A complete IrDA<sup>®</sup> Protocol stack in a single chip, including mandatory protocols (IrPHY<sup>™</sup>, IrLAP<sup>™</sup>, IrLM<sup>™</sup>P) and optional protocols (IrLPT<sup>™</sup>, IrCOMM<sup>™</sup>+TinyTP<sup>™</sup>, OBEX<sup>™</sup> transport or TinyTP with customized IAS class name for IrSocket<sup>™</sup>).
- Also Includes IrPHY encoding/decoding, and interfaces directly to Infrared transceivers for data rate from 9.6kbps up to 115.2 kbps. Only an external Infrared transceiver is needed to complete an IrDA compliant infrared communication subsystem.
- ACT-IR8250P supports IrDA Secondary mode only.
- Supports 64 bytes data packet for IrDA IrLAP frame.
- Interfaces to Host device via a full function UART port.
- Supports host baud rate from 300k bps to 115.2k bps selecting by programmable settings.
- Programmable Device name, IAS class name and data format setting.
- Available in programmed and tested chip (ACT-IR8250P), assembled & tested board (ACT-IR8250PDB), or assembled & tested evaluation kit (ACT-IR8250PEK).
- Low supply voltage, 3.0 V to 3.6 V.
- Low current consumption; 2  $\mu$ A standby, 3 mA active.
- Small low profile plastic 28-pin SSOP/TSSOP package.
- In-system-programmable FLASH, facilitates firmware changes or updates.
- The evaluation kit (ACT-IR8250PEK) includes AC power supply, RS232 level translators, and PC software for in-system re-programming of firmware and future firmware options.
- ACT-IR8250PEK consists of: ACT-IR82x0PMB (motherboard) + ACT-IR8250PDB + Self-downloadable SW to program ACT-IR8250P firmware.
  - 1) ACT-IR82x0PMB: RS232 level converter, DB9 connector, probe pins and ACT-IR8250PDB connector.
  - 2) ACT-IR8250PDB (daughter board for direct connection to your embedded PCB):  
Self-contained full-function IrDA module, which consists of: ACT-IR8250P protocol IC + IrDA transceiver + 3.3V interface connector.
- A very useful “Evaluation Kit Full Set” is ACT-IR8250PEKK, which is: ACT-IR8250PEK + ACT-IR4000US (notebook/desktop USB-IrDA adapter). This kit set can test ACT-IR8250P (connected to your device), to exchange IrDA data with ACT-IR4000US (connected to PC USB port), running hyper-terminal under Windows IrDA driver. To avoid debugging multiple issues: e.g., Is this a PDA application issue (IrDA SW activated and behaves properly, with the matching protocol layer? ACT-IR8250P to host interface issues (UART data rates, flow control, data bit/parity/stop bit, UART signal pins, power levels)? Performance issues (throughput, distance, error rate/dropping bits)?



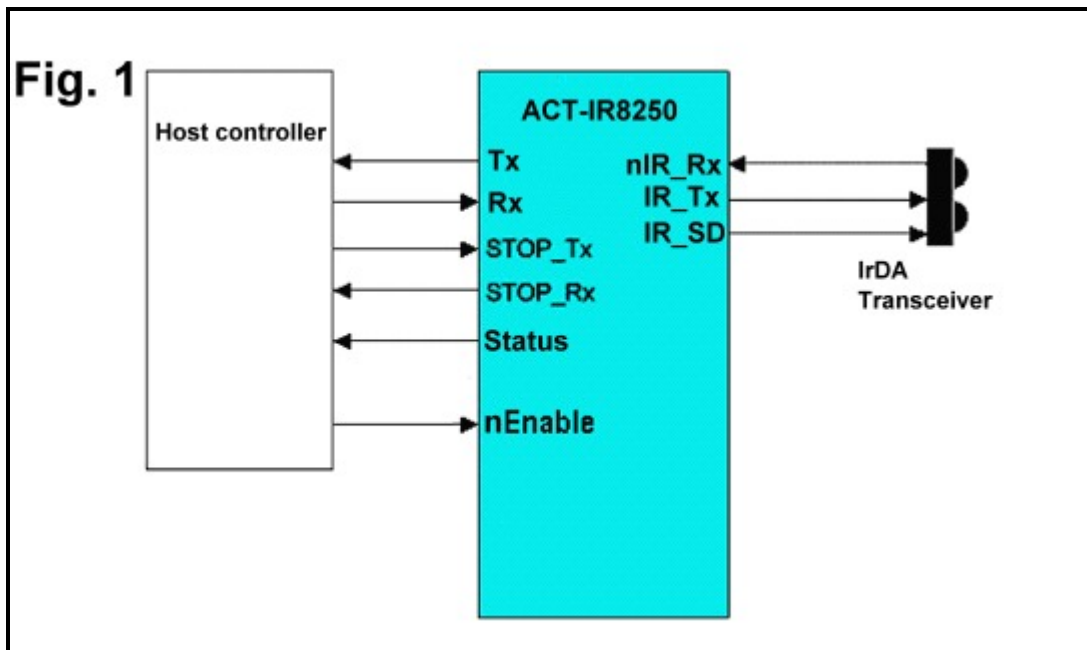
**ACT-IR8250P**

## 2. OVERVIEW

ACT-IR8250P is a low cost, small pin-count, high-integration and in-system-programmable micro-controller, with on-chip IrDA protocol stack and on-chip Infrared physical encoder/decoder. It provides a serial interface to a host device that intends to have Infrared communication capability. The host device can be any equipment or device that needs to communicate with IrDA enabled devices via IrDA protocol with only a wired serial interface. ACT-IR8250P will handle all the details about IrDA protocol. It sends/receives user data to/from the host device via the wired serial interface with hardware flow-control.

IrDA has two modes; one is Primary, and the other is Secondary. The difference between them is that Primary initiates the discovery, negotiation and connection sequence to Secondary, and decides IrDA protocol parameters; while Secondary always passively waits for commands from Primary. Both modes can run different protocols, and both may send or receive user data.

**ACT-IR8250P supports Secondary mode only.** Fig.1 is system diagram.



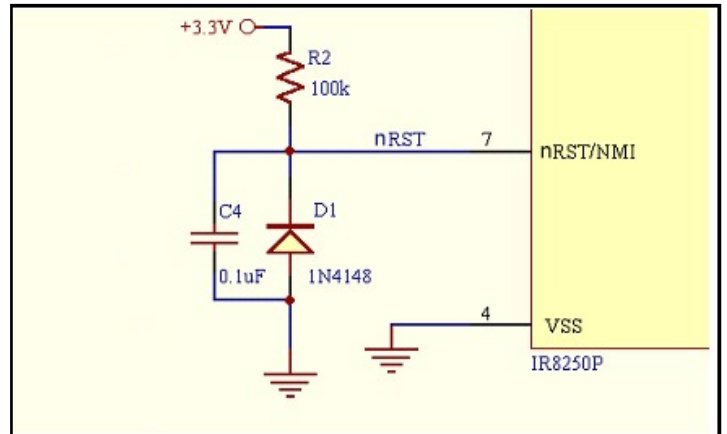
### 3. PINS DESCRIPTION

Symbol	Pin No.	I/O Type	Descriptions
TEST	1	I	Reserved. Pull low with 30k ohm resistor.
VCC	2	Pwr	Digital supply voltage, positive terminal.
P2.5	3	I/O	Reserved. Pull high with 30k ohm resistor.
VSS	4		Digital supply voltage, negative terminal. Ground,
XOUT	5	I/O	Output terminal of crystal oscillator.
XIN	6	I	Input port for crystal oscillator. Standard crystals can be connected.
nRST/NMI	7	I	Reset input. (n: Active low )
P2.0/nEnable	8	I	Power control from Host. (n: Active low ) High=Power down ACT-IR8250P, Low=Enable and power on.
P2.1/IR_SD	9	O	Shut down transceiver. High=Shut down, Low=Enable.
P2.2/STOP_TX	10	I	TX flow control from host. High=Host not ready to accept TX, Low=Host ready to accept TX.
P3.0 ~ P3.3	11 ~ 14	I/O	Reserved. Keep it open.
P3.4/TX	15	O	Serial data to Host. High=Idle / Stop bit / 1-bit. Low=Start bit / 0-bit.
P3.5/RX	16	I	Serial data from Host. High=Idle / Stop bit / 1-bit. Low=Start bit / 0-bit.
P3.6 ~ P3.7	17 ~ 18	I/O	Reserved. Keep it open.
P2.3/IR_TX	19	O	Transmit data to transceiver. High= IR on, Low=IR off.
P2.4	20	I/O	Reserved. Keep it open.
P1.0/Status	21	O	IrDA status to Host. High=No IrDA connection. Low=IrDA connection active.
P1.1/STOP_RX	22	O	RX flow control to Host. High=ACT-IR8250P not ready to accept RX, Low=ACT-IR8250P ready to accept RX.
P1.2/nIR_RX	23	I	Received data from transceiver. (n: Active low ) High=No IR, Low=IR detected.
P1.3 ~ P1.7	24 ~ 28	I/O	Reserved. Keep it open.

## 4. DEVICE OPERATION

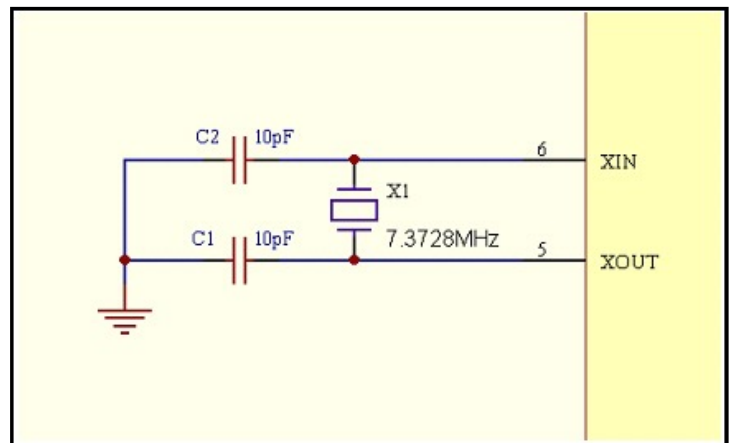
### 4.1. RESET Circuit

ACT-IR8250P will be reset when nRST is pulled low. It needs a 100K ohms resistor, 0.1uF capacitor and a diode to implement the reset circuit. Please refer to right figure.



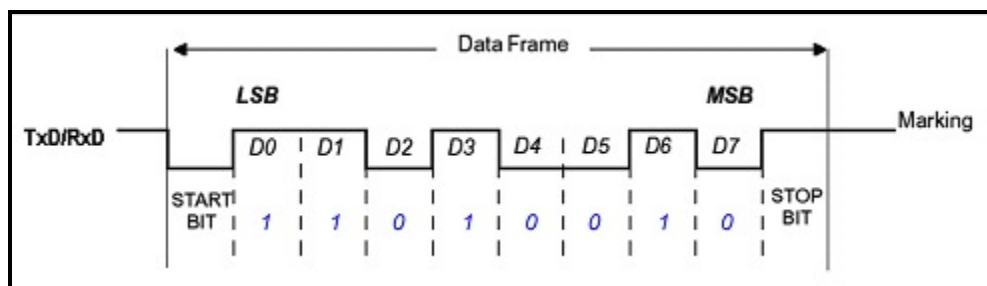
### 4.2. Crystal Circuit

ACT-IR8250P needs a specified clock to operate. Please refer to right figure.



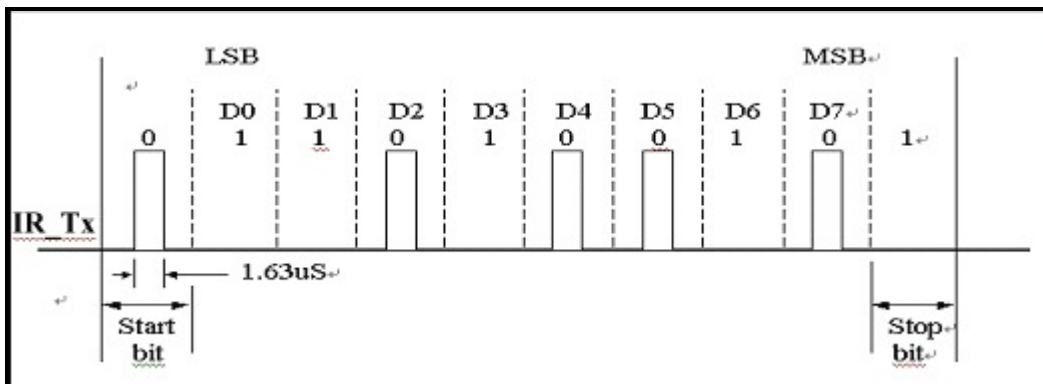
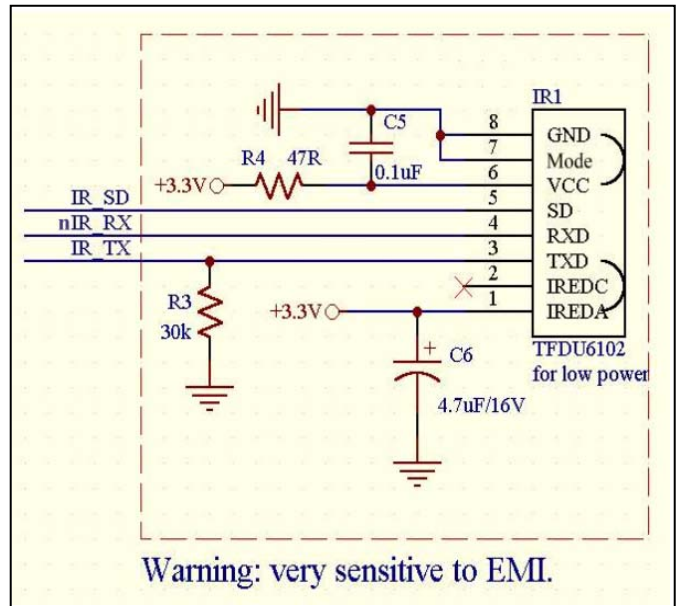
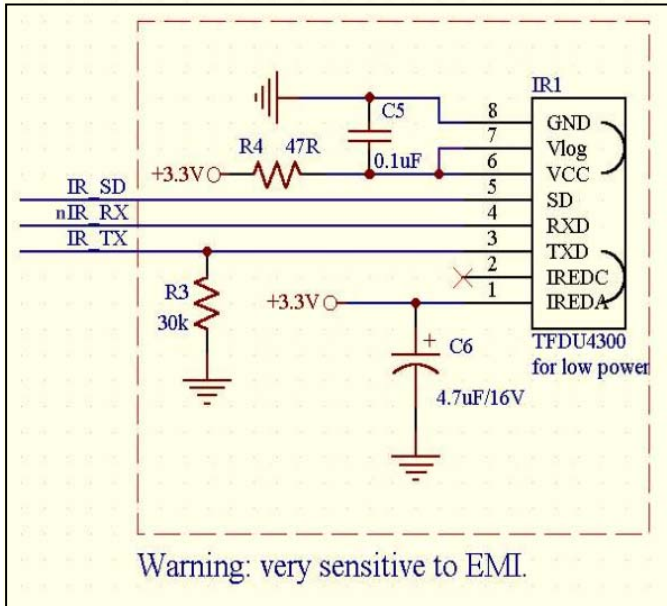
### 4.3. Host Interface

The host interface of ACT-IR8250P is a full-duplex asynchronous serial data interface. The data bytes are transmitted via TX and received via RX. Each data byte consists of one start bit (0), 8 data bits (LSB first, MSB last) and a stop bit (1).



### 4.4. IR Port Interface

The IR port of ACT-IR8250P can be connected to most transceiver. The data is transmit by pin IR\_TX and data received by nIR\_RX. IR\_SD can shut down transceiver when ACT-IR8250P is disabled. This pin is optional. The below figure is the signal specification of IR\_TX, it sends 1.63  $\mu$ S pulse infrared signal out.



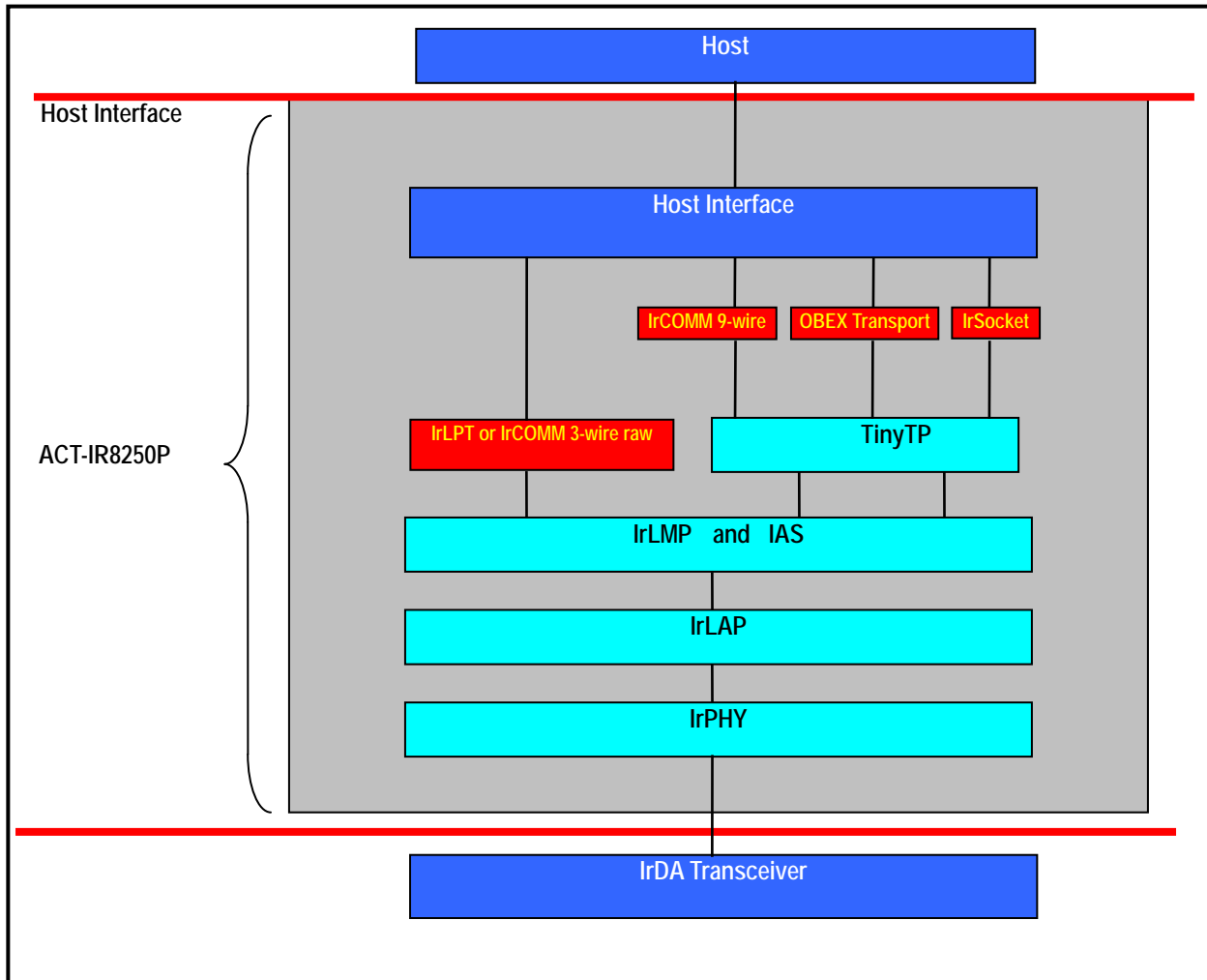
### 4.5. Operating Modes

When nEnable is high, ACT IR8250P drives IR\_SD high (to shutdown the IR transceiver) and puts itself to sleep. In this sleep state, it can be awoken only by nEnable going low.

When nEnable is low, ACT IR8250P drives IR\_SD low (to power up the IR transceiver) and puts itself to sleep. In this sleep state, it can be awoken by any incoming IR signal. Once awoken, it will either actively communicate with an IrDA Primary device (PC, PDA, Cell phone, etc.), or go back to sleep if no IrDA Primary is there.

## 5. IrDA PROTOCOLS SUPPORTED

The following figure is the block diagram of ACT-IR8250P protocols architecture. The red colored blocks represent different optional upper layers. Only one of the red colored blocks can be included at a time.



## 6. ACT-IR8250P PARTS ID AND FIRMWARE NUMBER SYSTEM

ACT-IR8250P- #####

(Please contact [irda-info@actisys.com](mailto:irda-info@actisys.com) or [info@actisys.com.tw](mailto:info@actisys.com.tw) for updated firmware and parts #)

## 7. CONNECT ACT-IR8250P TO A HOST DEVICE WITH RS232 PORT

Devices that use serial cables for their communication are split into two categories. These are DCE (Data Communications Equipment) and DTE (Data Terminal Equipment.) Data Communications Equipment is the device such as your modem, TA adapter, plotter etc while Data Terminal Equipment is your Computer or Terminal. The following shows how to connect ACT-IR8250P to a DTE and a DCE. Note: A RS232 level converter chip is needed when ACT-IR8250P is connected to a RS232 interface

There are a total of 7 signals between the host and ACT-IR8250P. The pin assignment and name of each signal at the chip levels are summarized in Table 1 below. Please note that DTE denotes signals on the RS232 board or device. In order to connect them to another DTE, a null-modem converter is used in-between. The pin assignments and the names are listed in this table.

**Table : Host interface signals**

ACT-IR8250P			RS232 DTE device			RS232 DCE device		
Pin No.	Type	Name	Pin No.	Type	Name	Pin No.	Type	Name
15	O	TX	2	I	RX	3	I	RX
16	I	RX	3	O	TX	2	O	TX
8	I	nEnable	4	O	DTR	6	O	DSR
21	O	Status	6	I	DSR	4	I	DTR
10	I	STOP_TX	7	O	RTS	8	O	CTS
22	O	STOP_RX	8	I	CTS	7	I	RTS
4		GND	5		GND	5		GND

## 8. IMPLEMENTATION NOTICE

Following signals lists the description of implementation notes when designed into board:

### 8.1. Power supply

Pin	Name	Comments
2	VCC	Digital power. Connect a 0.1 $\mu$ F bypass capacitor at this pin.
4	VSS	Digital ground

### 8.2. Crystal Oscillator

Pin	Name	Comments
6	XTIN	Input port for crystal oscillator. Only standard crystals can be connected.
5	XTOUT	Output terminal of crystal oscillator

Both of these two pins connect a 20pF capacitor.

### 8.3. Reset

Pin	I/O type	Name	Comments
7	I	nRST	Active low reset. This signal can be generated by the host, a RC circuit or a RESET chip. It supports Brown-out feature.

### 8.4. IrDA Transceiver

Pin	I/O type	Name	Comments
19	O	Ir_TX	IrDA Transmitter, high active. Connect to TXD pin of IrDA transceiver.
23	I	nIr_RX	IrDA Receiver, active low. Connect to RXD pin of IrDA transceiver.
9	O	IR_SD	Transceiver power control.

Please see the transceiver's specification to get more detail information about transceiver.

Place ACT-IR8250P chip next to transceiver module as close as possible. And keep chip away from high power consumption components.

## 9. IN-SYSTEM PROGRAMMING IN ACT-IR8250P

ACT-IR8250P supports In-system Programming. It is useful to upgrade firmware of ACT-IR8250P if IrDA protocol, host baud rate or data format requested to be changed on target board (Please refer to ACT-IR8250SW to get more detail operations). To implement ISP, there are some signals needed to do the following:

**(1) Status (output):**

Pin-21 (P1.0) of ACT-IR8250P must be converted to RS232 level and connected to the DSR input of PC COM Port.

**(2) Stop\_Rx (output):**

Pin-22 (P1.1) of ACT-IR8250P must be converted to RS232 level and connected to the CTS input of PC COM Port.

**(3) Tx (output):**

Pin-15 (P3.4) of ACT-IR8250P must be converted to RS232 level and connected to the RxD input of PC COM Port.

**(4) PC COM Port DTR (output):**

It must be converted to 3.3V logic level and connected to Enable (input) at Pin-8 (P2.0) of ACT-IR8250P. This signal line must not be driven by any other circuit.

**(5) PC COM Port RTS (output):**

It must be converted to 3.3V Logic level and connected to Stop\_Tx (input) at Pin-10 (P2.2) of ACT-IR8250P. This signal line must not be driven by any other circuit.

**(6) PC COM Port TxD (output):**

It must be converted to 3.3V Logic level and connected to Rx (input) at Pin-16 (P3.5) of ACT-IR8250P. This signal line must not be driven by any other circuit.

**(7) Ground:**

(Pin-4) of ACT-IR8250P, ground of RS232 level converter, and ground of PC must be connected together.

(8) You must power-up the ACT-IR8250P after the PC program "ACT-IR8250SW" informs you to "Remove J10" and before you click "OK".

## 10. ACT-IR8250P EVALUATION KIT (ACT-IR8250PEK AND ACT-IR8250PEKK)

It is recommended that customer verify the compatibility with your host system by using ACT-IR8250P evaluation kit, ACT-IR8250PEK. It is a self-contained unit, with ACT-IR8250P, IrDA transceiver, RS232-level converter and external AC power connector. All built into a compact package. ACT-IR8250 evaluation kit immediately enables your host system to be IrDA (IrReady) certifiable. Moreover, this kit can be a full PCB with RS232 interface, or as half-PCB with UART interface, without the burden of RS232 interface circuitry.

**ACT-IR8250PEK package consists of:**

**IR82x0PMB (motherboard) + ACT-IR8250PDB + Self-downloadable SW to program ACT-IR8250P firmware.**

- 1) **ACT-IR82x0PMB**: RS232 level converter, DB9 connector, probe pins and ACT-IR8250PDB connector.
- 2) **ACT-IR8250PDB (daughter board for direct connection to your embedded PCB)**:  
Self-contained full-function IrDA module, which consists of:  
ACT-IR8250P protocol IC + IrDA transceiver + 3.3V interface connector.

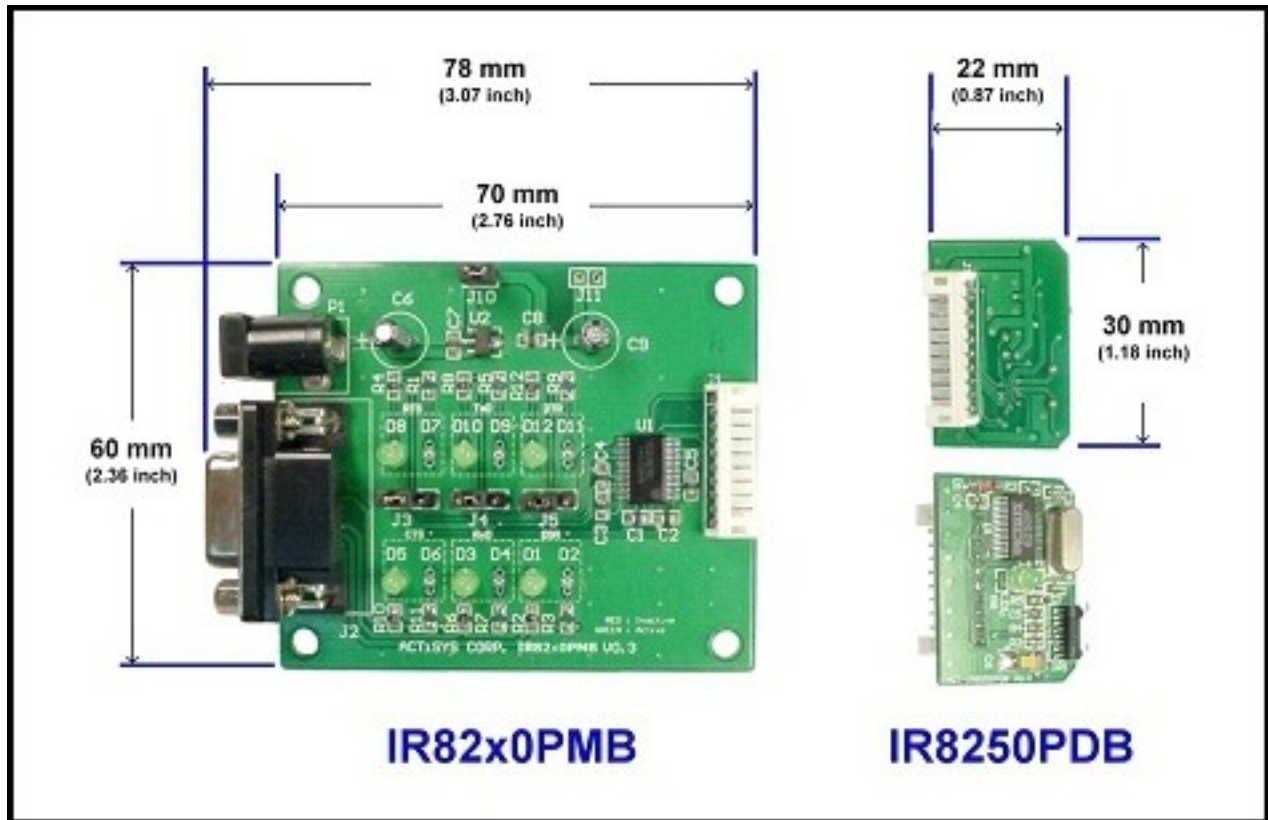
A more useful Evaluation Kit Full Set is **ACT-IR8250PEKK**, which is: ACT-IR8250PEK + ACT-IR4000US (notebook/ desktop USB-IrDA adapter). This set can test ACT-IR8250P (connected to your device), to exchange IrDA data with ACT-IR4000US (connected to PC USB port), running Hyper-terminal with Windows IrDA driver. It can avoid debugging multiple issues: e.g., Is this a PDA application issue (IrDA SW activated and behaves properly)? Is this an ACT-IR8250P to host interface issue (UART data rates, flow control, data bit/parity/stop bit, signal pins, power levels)? Or is this a performance issue (throughput, distance, error rate/dropping bits)?

The following figure is ACT-IR8250P evaluation kit, ACT-IR8250PEK.

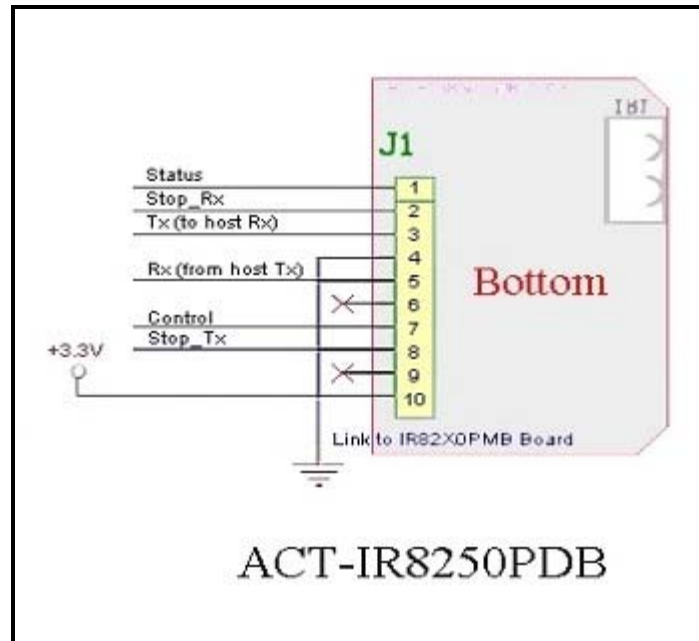
It consists of two boards: ACT-IR82x0PMB on the left, and ACT-IR8250PDB on the right, connected to each other by 10 pin connector/cable. You can connect this evaluation kit to your host RS232 port, or use ACT-IR8250PDB board to connect to your host CMOS level UART signals.

The corresponding circuit schematics for ACT-IR82x0PMB and ACT-IR8250PDB are also included below. The detail User's Guideline is described in Appendix 1. How to use ACT-IR8250PEK.

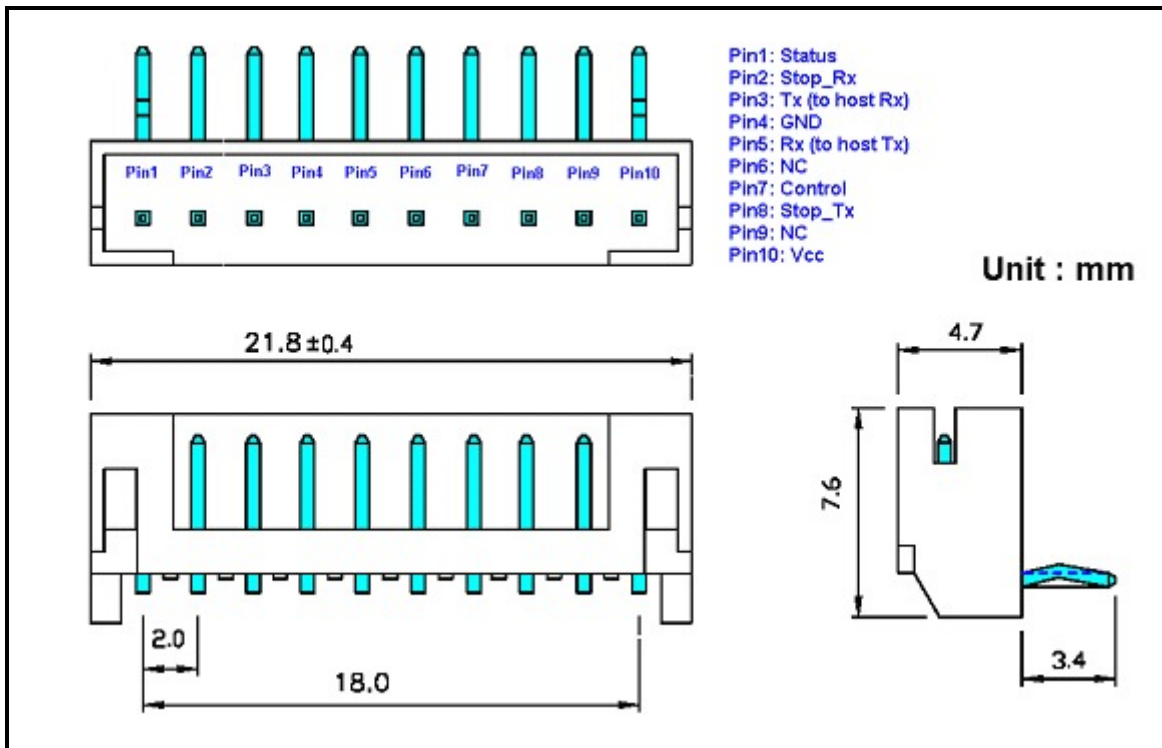
### 10.1. ACT-IR8250PEK PCB Photos And Dimensions:



PCB footprint & dimensions, part number, supplier and pinout spec for the connector J1 on IR8250x0PMB and ACT-IR8250PDB boards are as follows: Molex, part number SD-48148. You can get dimensional information at: [www.molex.com](http://www.molex.com). More details on the next page.

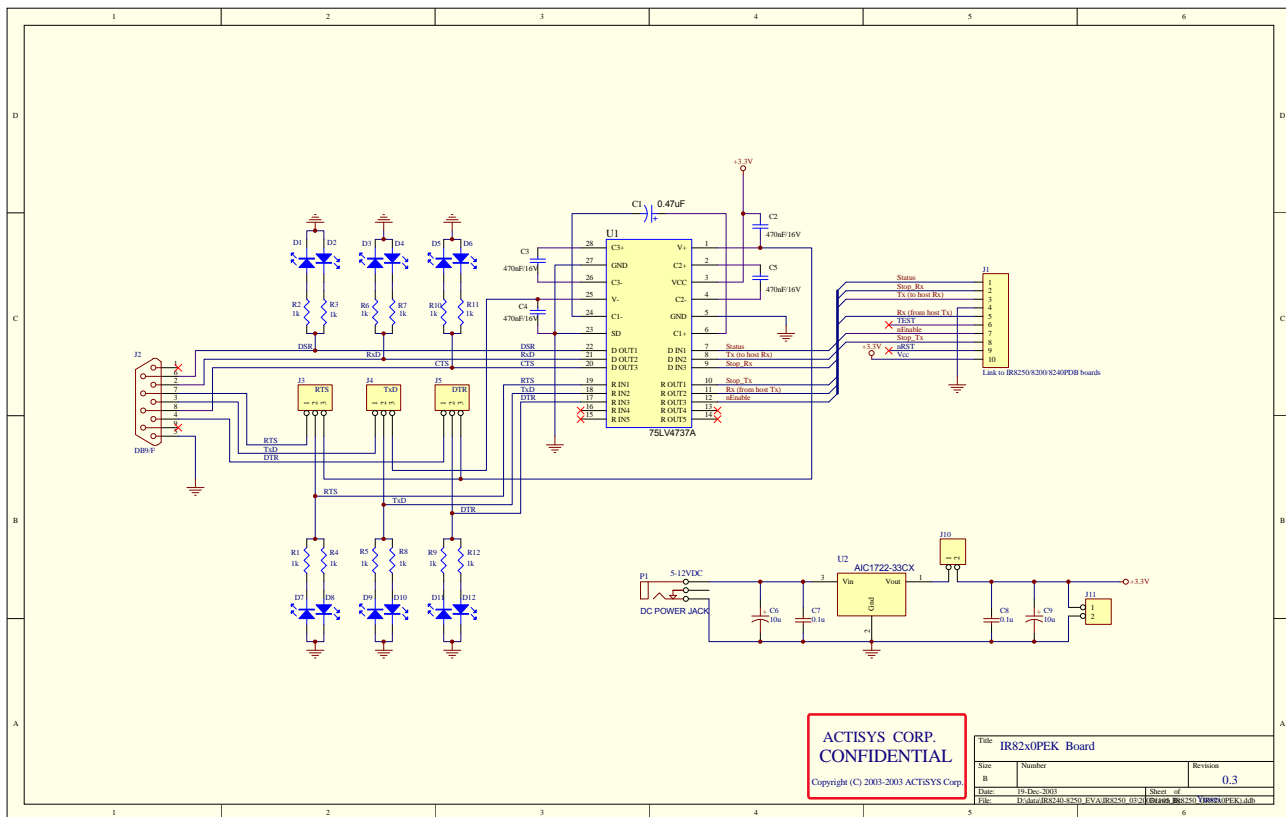


J1 Connector: CONN JST(M) 10Pin



## 10.2. ACT-IR8250PEK Circuit Schematics:

### 10.2.1. ACT-IR82x0PMB Motherboard Circuit Schematic:

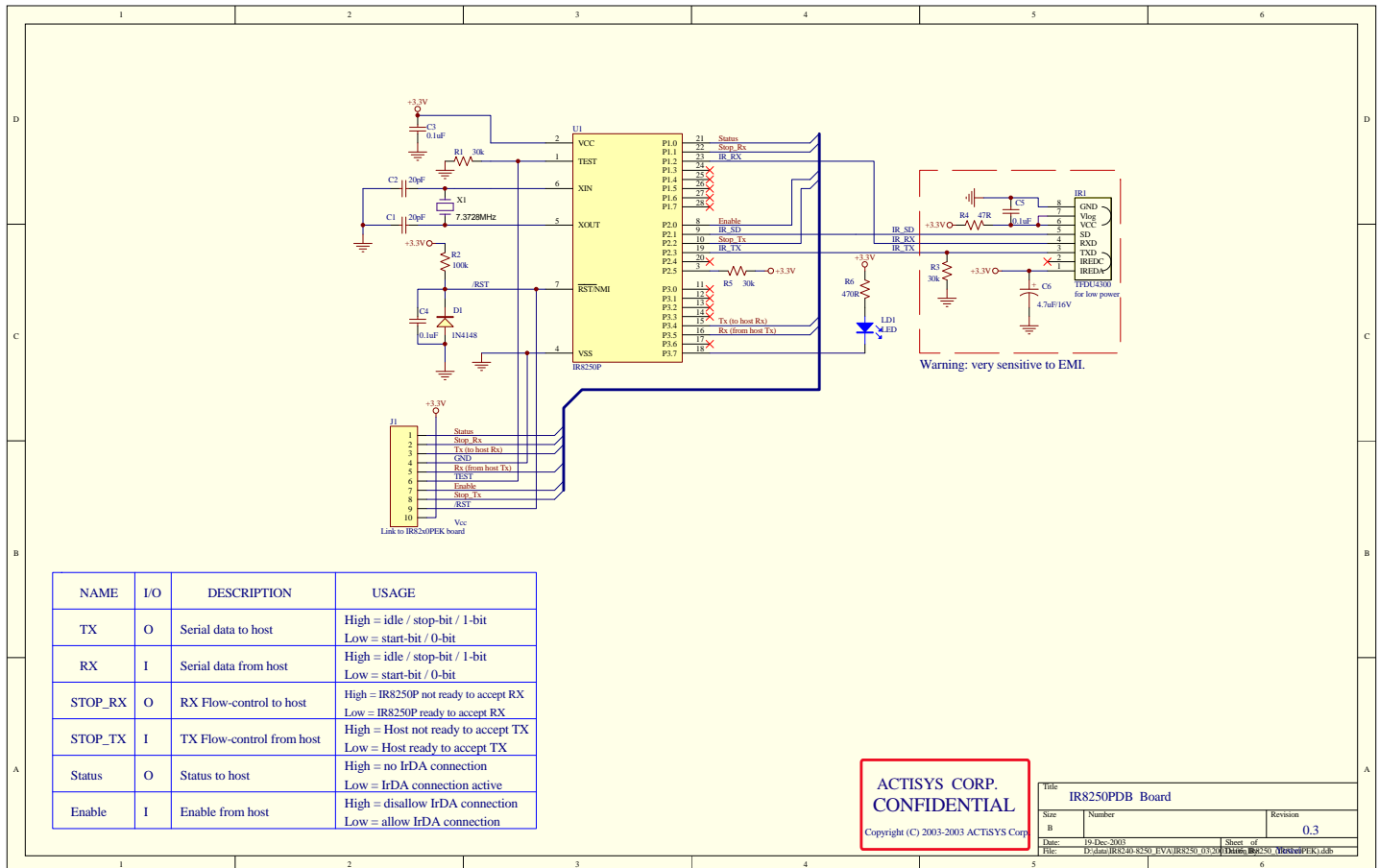


PCB footprint & dimensions, part number, supplier and pinout spec for the connector J1 on ACT-IR8250x0PMB and ACT-IR8250PDB boards are as follows: Molex, part number SD-48148. You can get dimensional information at: [www.molex.com](http://www.molex.com). More details on [section 10.1](#).

**10.2.2. ACT-IR8250PDB Daughter Board Circuit Schematic**

(Same as Application Reference Circuit in [Chapter 12](#))

If your design uses daughter board configuration for convenient placement against front panel, with cable connection to your system board, it is advisable to maintain the 10 pin connector as in this reference circuit. This enables in-system ACT-IR8250P firmware re-programming with new firmware if such need arises. This flexibility can extend your product lifetime, improve compatibility with new IrDA devices, add or change IrDA functionality. Indeed it's a valuable and useful feature.



PCB footprint & dimensions, part number, supplier and pinout spec for the connector J1 on ACT-IR8250x0PMB and ACT-IR8250PDB boards are as follows: Molex, part number SD-48148.

You can get dimensional information at: [www.molex.com](http://www.molex.com). More details on [section 10.1](#).

## 11. CHARACTERISTICS AND SPECIFICATION

### 11.1. Absolute maximum ratings ☆

Parameter	Value
Voltage applied at VCC to VSS	-0.3 V to 4.1 V
Voltage applied to any pin (referenced to VSS)	-0.3 V to VCC+0.3 V
Diode current at any device terminal	±2 mA
Storage temperature, Tstg (un-programmed device)	-55°C to 150°C
Storage temperature, Tstg (programmed device)	-40°C to 85°C

☆ Stresses beyond those listed under “absolute maximum ratings” may cause permanent damage to the device. These are stress ratings only, and functional operation of the device at these or any other conditions beyond those indicated under “recommended operating conditions” is not implied. Exposure to absolute-maximum-rated conditions for extended periods may affect device reliability.

NOTE: All voltages referenced to VSS.

### 11.2. Recommended operating conditions:

Parameter	MIN.	TYPICAL	MAX.	Units
Supply voltage during program execution, VCC	1.8	3.3	3.6	V
Supply voltage, VSS		0		V
Operating free-air temperature range, TA	-40		85	°C
DC current (Shut down mode)		2		μA
DC current (Active mode)		2		mA
Crystal frequency		7.3728		MHz

The DC current in active mode is not included transceiver operating current.

Electrical characteristics over recommended ranges of supply voltage and operating free-air temperature (unless otherwise noted)

Schmitt-trigger inputs Port P1 to Port P3; P1.0 to P1.7, P2.0 to P2.5, P3.0 to P3.7

PARAMETER	TEST CONDITIONS	MIN	TYP	MAX	UNIT
VIT+ Positive going input threshold voltage	VCC = 2.2V	1.1		1.5	V
	VCC = 3.0V	1.5		1.9	
VIT- Negative going input threshold voltage	VCC = 2.2V	0.4		0.9	V
	VCC = 3.0V	0.9		1.3	
Vhys Input voltage hysteresis (VIT+ VIT- )	VCC = 2.2V	0.3		1.1	V
	VCC = 3.0V	0.5		1.0	

**outputs Port 1 to P3; P1.0 to P1.7, P2.0 to P2.5, P3.0 to P3.7**

PARAMETER		TEST CONDITIONS			MIN	TYP	MAX	UNIT
V <sub>OH</sub>	High-level output voltage	I <sub>(OHmax)</sub> = -1.5 mA	V <sub>CC</sub> = 2.2 V	See Note 8	V <sub>CC</sub> -0.25	V <sub>CC</sub>	V	
		I <sub>(OHmax)</sub> = -6 mA		See Note 9	V <sub>CC</sub> -0.6	V <sub>CC</sub>		
		I <sub>(OHmax)</sub> = -1.5 mA	V <sub>CC</sub> = 3 V	See Note 8	V <sub>CC</sub> -0.25	V <sub>CC</sub>		
		I <sub>(OHmax)</sub> = -6 mA		See Note 9	V <sub>CC</sub> -0.6	V <sub>CC</sub>		
V <sub>OL</sub>	Low-level output voltage	I <sub>(OLmax)</sub> = 1.5 mA	V <sub>CC</sub> = 2.2 V	See Note 8	V <sub>SS</sub>	V <sub>SS</sub> +0.25	V	
		I <sub>(OLmax)</sub> = 6 mA		See Note 9	V <sub>SS</sub>	V <sub>SS</sub> +0.6		
		I <sub>(OLmax)</sub> = 1.5 mA	V <sub>CC</sub> = 3 V	See Note 8	V <sub>SS</sub>	V <sub>SS</sub> +0.25		
		I <sub>(OLmax)</sub> = 6 mA		See Note 9	V <sub>SS</sub>	V <sub>SS</sub> +0.6		

- NOTES: 8. The maximum total current, I<sub>OHmax</sub> and I<sub>OLmax</sub>, for all outputs combined, should not exceed ±12 mA to hold the maximum voltage drop specified.
9. The maximum total current, I<sub>OHmax</sub> and I<sub>OLmax</sub>, for all outputs combined, should not exceed ±48 mA to hold the maximum voltage drop specified.
10. One output loaded at a time.

## 12. APPLICATION CIRCUIT

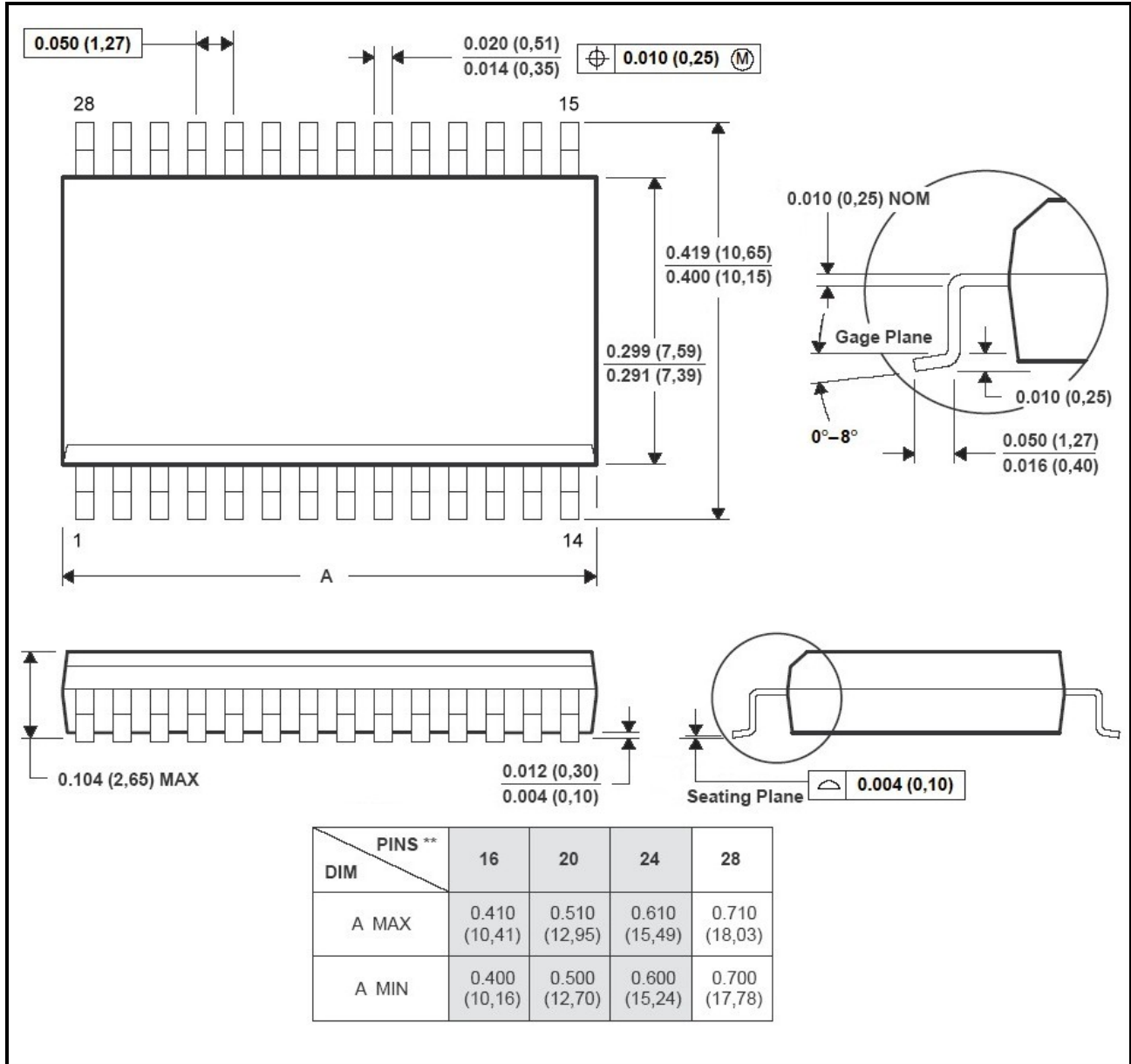
(Please refer to Circuit Schematic of ACT-IR8250PDB in [Section 10.2.2](#))

PCB footprint & dimensions, part number, supplier and pinout spec for the connector J1 on ACT-IR8250x0PMB and ACT-IR8250PDB boards are as follows: Molex, part number SD-48148.

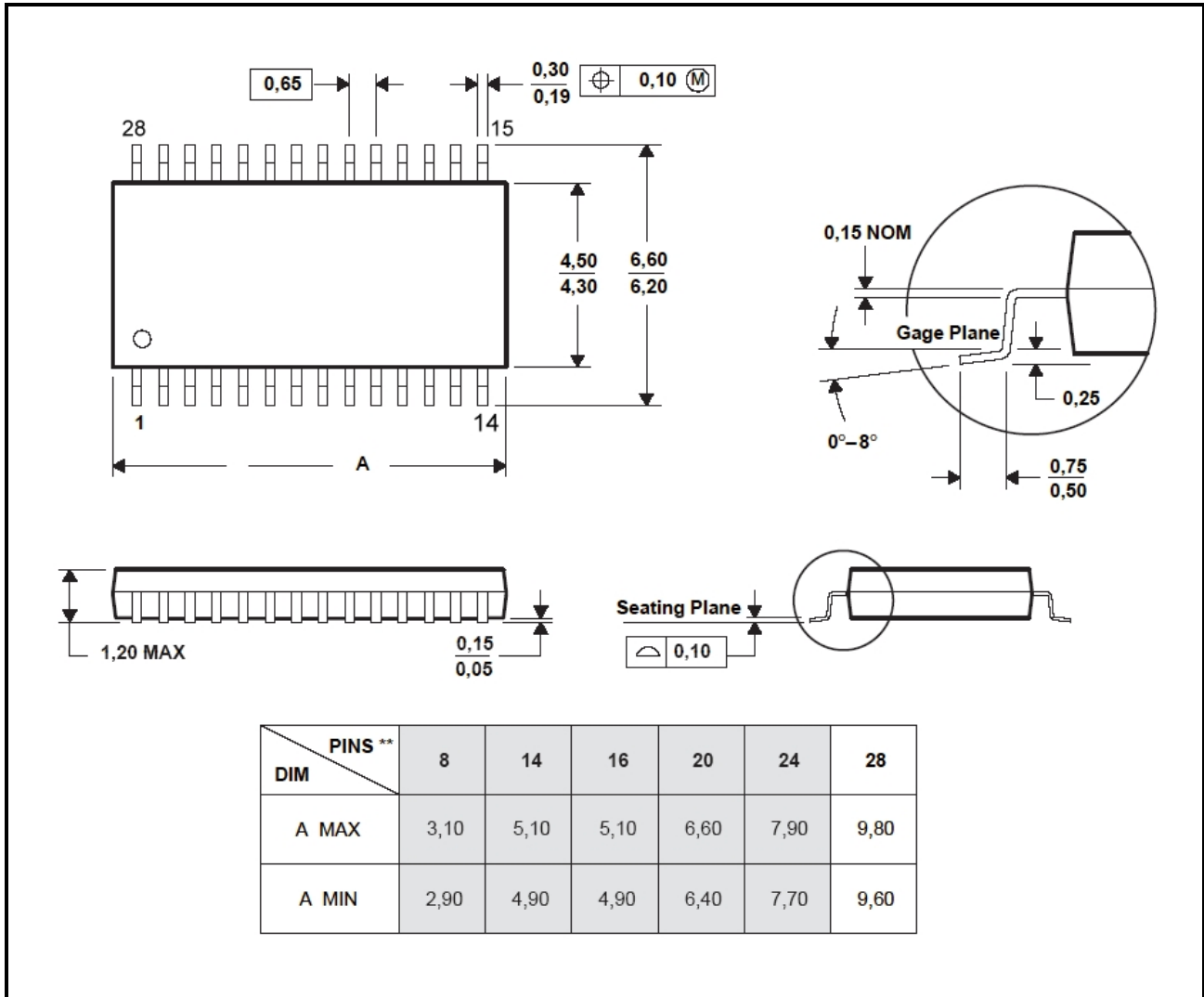
You can get dimensional information at: [www.molex.com](http://www.molex.com). More details on [section 10.1](#).

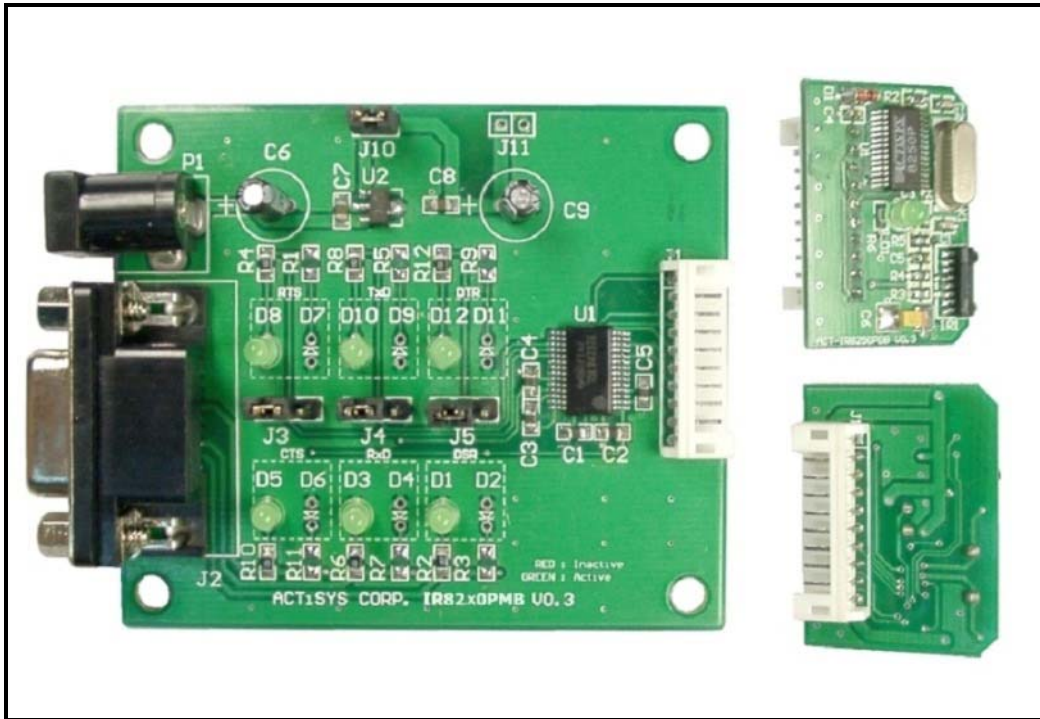
### 13. PACKAGE DIMENSIONS

#### 13.1. SOP28



13.2. TSSOP28



**APPENDIX 1. HOW TO USE ACT-IR8250PEK (ACT-IR8250P EVALUATION KIT)**

The following steps instruct you how to use ACT-IR8250PEK:

**A. ACT-IR8250PEK Package:** Includes the following:

- 1) ACT-IR82x0PMB: ACT-IR82x0P IC series to RS232 interface motherboard.
- 2) ACT-IR8250PDB: ACT-IR8250P CMOS 3.3V interface daughter board.
- 3) One 10 pin short cable/connectors to connect ACT-IR8250PDB to ACT-IR82x0PMB.
- 4) One 10 pin connector (J1) to connect ACT-IR8250PDB+cable to your host PCB.
- 5) 5 ~12 VDC AC power adapter.

**B. Operating Procedure:**

- 1) Connect ACT-IR82x0PMB and ACT-IR8250PDB by using the short 10 pin cable/connectors.
- 2) Plug the DC power in P1 connector. 5V to 12V DC is fine.
- 3) Connect ACT-IR82x0PMB/DB9F directly, or use DB9M-to-DB9F extension cable (straight-through/ none-cross) to PC, or to your embedded host device which has DB9M(DTE) connector. ACT-IR82x0PMB plays as DCE, and any host device to which ACT-IR82x0PMB is attached, is DTE.
- 4) Activate host device's UART port, at this moment, LED D8 and D12 should light up.
- 5) Activate the other IrDA device (e.g. PDA or cellular phone) and face it to ACT-IR8250PDB. If IR link is successfully established between two devices, LED D1 and D5 will light up. It

means you can transmit and receive data between the two IrDA devices now.

- 6) In this IR-link set-up, your embedded host device+ACT-IR82x0PMB is IrDA secondary station, and PDA/cellphone is IrDA primary station. IrDA primary station initiates, commands and establishes IrDA connection.

### C. Definition of Jumpers and LEDs:

- 1) LED D8: When it lights up, means DTE (host) enables its RTS. When host UART buffer is going to be full, host should disable this signal line.
- 2) LED D10: When it flashes, means DTE (host) is sending data.
- 3) LED D12: When it lights up, means DTE (host) enables its DTR. Enabling DTR means host is ready and orders ACT-IR8250P to enter ready-to-receive mode.
- 4) LED D1: When it lights up, means ACT-IR8250P enables its DSR. D1 lights off means that IR link is not yet established.
- 5) LED D3: When it flashes, means ACT-IR8250P is receiving data from another IrDA device and sends these data to host device.
- 6) LED D5: When it lights up, means ACT-IR8250P enables its CTS. D5 lights off means ACT-IR8250P is not allowed to receive any data from host device (e.g. buffer full, etc.).
- 7) J3 and J5: If your host just supports 3 wire UART (Tx, Rx, and GND), you probably have to set DTR and RTS always enabled, i.e. set ACT-IR8250P in no-flow-control status.  
To accomplish this, either: a) Pin 2-3 shorted so DTR/RTS are always enabled, or  
b) Pin 1-2 shorted so host takes control of when DTR/RTS are enabled or disabled.
- 8) J4: Reserved.
- 9) J10: Power jumper, short it to apply external non-regulated power to ACT-IR8250P.  
You should NOT short J10 if you choose to us J11 below.
- 10) J11: 3VDC regulated power (e.g. battery) input connector traces. You may use this location to place your own 3VDC connector if you don't have available external non-regulated power to connect to J10. J11 SHOULD NOT be shorted.

D. Please refer to the software "ACT-IR8250SW" user's manual for detail features about ACT-IR8250PEK.

## 14. WARRANTY INFORMATION

ACTiSYS Corporation warrants the first end-user purchaser, for a period of 1 year from the date of purchase, that this wireless interface (The Product) will be free from defective workmanship and materials, and agrees that it will, at its option, either repair the defect or replace the defective Product or part thereof at no charge to the purchaser for parts or for labor.

This warranty does not apply to any appearance items of the Product, any consumable items such as paper, ink ribbon, or batteries supplied with the Product, or to any equipment or any hardware, software, firmware, or peripheral other than the Product. This warranty does not apply to any Product the exterior of which has been damaged or defected, which has been subjected to misuse, abnormal service or handling, or which has been altered or modified in design, construction or interfacing. Tampering with Label Voids Warranty.

In order to enforce the rights under this limited warranty, the purchaser should mail, ship or carry the Product, together with proof of purchase, to ACTiSYS.

The limited warranty described above is in addition to whatever implied warranties may be granted to purchasers by law. To the extent permitted by applicable law, ALL IMPLIED WARRANTIES INCLUDE THE WARRANTIES OF MERCHANT ABILITY AND FITNESS FOR USER ARE LIMITED TO A PERIOD OF 1 YEAR FROM THE DATE OF PURCHASE. Some states do not allow limitations on how long an implied warranty lasts, so the above limitation may not apply to you.

Neither the sales personnel of the seller nor any other person is authorized to make any warranties other than those described above, nor to extend the duration of any warranties beyond the time period described above on behalf of ACTiSYS. Corporation.

The warranties described above shall be the sole and exclusive remedy available to the purchaser. Correction of defects, in the manner and for the period of time described above, shall constitute full satisfaction of all claims, whether based on contract, negligence, strict liability or otherwise. In no event shall ACTiSYS Corporation be liable or in any way responsible, for any damages or defects in the Product which were caused by repair or attempted repairs performed by anyone other than ACTiSYS technician. Nor shall ACTiSYS Corporation be liable or in any way responsible for any incidental or consequential economic or property damage. Some states do not allow the exclusion of incidental or consequential damages, so the above exclusion may not apply to you.

### FOR YOU RECORDS

For your assistance in reporting this product in case of loss or theft, please record below the model number and serial, which are located on the bottom of the case. Please retain this information.

**Model Number:**

**Serial Number:**

**Date of Purchase:**



## 15. CONTACT INFORMATION

**GO WIRELESS WITH ACTiSYS IR**

**ACTiSYS**  
*The Wireless Infra-red Expert*

- ◆ IrDA Protocol Software For Portable Devices
- ◆ IrDA Test Software For Hardware Systems
- ◆ IrDA Printer And Computer Adapters

115.2K, 4M and 16M bps

IR100M/1000M

IR2000L

IR220L/L+

The graphic features a central red background with the ACTiSYS logo and tagline. Below the logo is a list of services. In the center, there are three images of IrDA hardware: a desktop adapter (IR100M/1000M), a handheld device (IR2000L), and a small adapter (IR220L/L+). Surrounding these are various devices connected by red lines: a printer, a PDA, a mobile phone, a camera, a laptop, and a desktop computer.

**ACTiSYS Corporation**  
921 Corporate Way  
Fremont, CA 94539, USA  
TEL:+1-510-490-8024, FAX:+1-510-623-7268  
E-Mail: [irda-info@actisys.com](mailto:irda-info@actisys.com)  
Web: <http://www.actisys.com>