



921 Corporate Way, Fremont, CA 94539, USA  
Tel: +1-510-490-8024, Fax:+1-510-623-7268  
Web: <http://www.actisys.com>, E-mail: [irda-info@actisys.com](mailto:irda-info@actisys.com)

***ACT-IR224UN-Lx / ACT-IR224UN-Lx-LE***

***USB to RAW SIR Serial Adapter***

***User's Manual***



**June 20, 2011**

**Version 1.2.0.2**

**© Copyright 2005-2011 ACTiSYS Corporation  
All Rights Reserved**

**Warning! Please Install Driver BEFORE  
you plug in the Dongle to USB port.**

## TABLE OF CONTENTS

<b>REVISION HISTORY .....</b>	<b>3</b>
<b>1. OVERVIEW .....</b>	<b>4</b>
<b>2. FEATURES .....</b>	<b>4</b>
<b>3. PACKAGE CONTENT .....</b>	<b>4</b>
<b>4. SPECIAL NOTICE &amp; SYSTEM REQUIREMENT .....</b>	<b>5</b>
4.1 Special Notice.....	5
4.2 System Requirement.....	5
<b>5. FAQ (FREQUENTLY ASKED QUESTIONS).....</b>	<b>5</b>
<b>6. GENERAL SETUP PROCEDURE – WINDOWS, MAC, ANDROID &amp; LINUX.....</b>	<b>7</b>
<b>7. INSTALLATION UNDER WINDOWS .....</b>	<b>7</b>
7.1 Common Installation Procedure.....	7
7.2 Driver Installation .....	8
<b>8. INSTALLATION UNDER MAC OS.....</b>	<b>12</b>
<b>9. INSTALLATION CHECK .....</b>	<b>16</b>
9.1 Check “Add or Remove Programs” or “Programs and Features” in Windows .....	16
9.2 Device Manager Check in Windows.....	16
9.3 Check from Apple System Profiler in Mac Machine.....	17
9.4 Android And Linux Based Equipments.....	18
<b>10. UN-INSTALL THE DRIVER .....</b>	<b>19</b>
10.1 Driver Un-installation For Windows 98/ME/2000/XP .....	19
10.2 Driver Un-installation For Windows Vista /Win 7 (32 & 64 bits).....	21
10.3 Driver Uninstallation For Mac.....	23
<b>11. OPERATION OF IR DONGLE.....</b>	<b>24</b>
<b>12. LED BEHAVIOR.....</b>	<b>24</b>
<b>13. IR DONGLE DIMENSIONS.....</b>	<b>24</b>
<b>14. CHARACTERISTICS AND SPECIFICATION .....</b>	<b>24</b>
<b>15. APPENDIX : TURN UAC ON/OFF IN WINDOWS VISTA /WIN 7 .....</b>	<b>25</b>
15.1 Check current UAC (User Account Control) Status.....	25
15.2 Turn On / Off UAC .....	26
<b>16. WARRANTY INFORMATION .....</b>	<b>27</b>
<b>17. CONTACT INFORMATION .....</b>	<b>28</b>

## REVISION HISTORY

Revision History		
Revision	Date	Comment
0.1	10/05/2006	Draft version
1.0	10/30/2006	Initial release
1.0.1	01/03/2007	Extracted Chapt. of detailed description for models & IR pulse format
1.1	01/25/2007	<ul style="list-style-type: none"> <li>• Added new configuration models and re-edited the chapter</li> <li>• Expanded function models to include competitors' compatible models</li> </ul>
1.1.1	04/14/2007	Removed IrReady label from dongle case; added CRoHS logo
1.1.2	04/25/2007	<ul style="list-style-type: none"> <li>• Revised Un-installation Chapters for utility &amp; driver; added FAQ</li> <li>• Modification in Installation Package for one time removal of both utility &amp; driver at a click</li> </ul>
1.1.3	05/16/2007	• Not released officially. Only for Internal use
1.1.4	05/22/2007	<ul style="list-style-type: none"> <li>• Modification In Utility GUI (COM Port Listing, Check For IR224UN During Launching Etc)</li> <li>• Removed Installation Package For Utility Program.</li> <li>• Modified Chapter Of Installation &amp; deleted section of Configuration insatallation &amp; Chapter of Configuration un-installation</li> <li>• Modified Chapter 14 for USB spec 2.0</li> </ul>
1.1.4.1	05/30/2007	• Rewrite Chapter of General setup procedure. Added section of "Using configuration utility to check"
1.1.5	08/28/2007	<ul style="list-style-type: none"> <li>• Included Driver installation/un-installation procedure under Windows Vista OS.</li> <li>• Included "UAC" Security features of Windows Vista OS in FAQ section &amp; Appendix.</li> <li>• Omitted IR mate 210 function</li> </ul>
1.1.6	09/27/2007	<ul style="list-style-type: none"> <li>• Firmware upgraded from version 1.2 to 1.3</li> <li>• Modified in Configuration Utility (based on firmware change)</li> <li>• FAQ updated in User Manual</li> </ul>
1.1.7	10/17/2007	• Added Chapter 4 Special Notice & System Requirement
1.1.8	10/28/2008	• System requirement included Win 98, ME, Win CE, Linux, & Mac
1.1.9	7/22/2009	• Added installation chapter, installation check section and uninstallation section for Mac. Added Factory Default Setting section. Modification in Configuration Utility.
1.2.0	7/15/2010	• Update all-in-1 driver installer v1.2.10 (4/08/2010) for Windows series which Win 7 included.
1.2.0.1	8/17/2010	• Updated for IR224UN-Lx
1.2.0.2	6/20/2011	<ul style="list-style-type: none"> <li>• Included Android.</li> <li>• Combined Manual for IR224UN-Lx &amp; IR224UN-Lx-LE</li> </ul>

ACTiSYS reserves the right to make changes without further notice to any products herein to improve reliability, function or design. ACTiSYS does not assume any liability arising out of the application or use of any product or circuit described herein.

**All trademarks, logos, organization & company names and product model names are the properties of their respective owners.**

## 1. OVERVIEW

**ACT-IR224UN-Lx** or **ACT-IR224UN-Lx-LE** is an USB-to-Raw-IR adapter. It generates a virtual COM port for user to transmit data with other IR devices, without IrDA<sup>®</sup> protocols required. And its driver will help user to make IR connection without changing any Application Program in new PC, which is only equipped with USB for COM port access. **The Only Difference between ACT-IR224UN-Lx series and ACT-IR224UN-Lx-LE series is their LED behavior.** Please refer to [Chapter 12. LED Behavior](#) for detailed comparison.

## 2. FEATURES

- a. **ACT-IR224UN-Lx series** includes all customized sub-model of ACT-IR224UN, i.e., ACT-IR224UN-Li, ACT-IR224UN-L+, & ACT-IR224UN-LNnn, where nn represents the specified Baud Rate: LN96 for 9.6k bps, LN19 for 19.2k bps, LN38 for 38.4k bps, LN57 for 57.6k bps, LN115 for 115.2k bps. The same philosophy applies to the model names of **ACT-IR224UN-Lx-LE series**. i.e., it includes ACT-IR224UN-LN96-LE, ACT-IR224UN-LN19-LE, ACT-IR224UN-LN38-LE etc., etc.
- b. Supports 8 baud rates: 1.2k, 2.4k, 4.8k, 9.6k, 19.2k, 38.4k, 57.6k and 115.2k bps, depending on what sub-model you sepecified.
- c. 1.63  $\mu$ s IR pulse.
- d. Supports No IrDA<sup>®</sup> protocols, **only Raw IR**.
- e. Compatible with and replaces RS232 Raw IR adapters: ACT-IR220L+, ACT-IR220L, ACT-IR220Li and ACT-IR220LN.
- f. Supports Virtual COM port. Nothing or minimum changes in user's software which are already working with RS232 adapters originally.
- g. Less Latency time, average is 1.5 ms. The latency of a real COM port is about 0.5ms.
- h. Fully compliant with USB 2.0 (Full speed, 12 Mbps).
- i. 256 bytes outbound buffer and 256 bytes inbound buffer.
- j. Supports Windows 98/ME/2000, [Win XP SP2/Vista/Win 7/Win Server 2003/Win Server 2008 \(32 & 64 bits\)](#), Mac OS (both Intel & Power PC), Linux, [Android](#) & Windows-CE (ARM & x86)

## 3. PACKAGE CONTENT

ACT-IR224UN-Lx / [ACT-IR224UN-Lx-LE](#) package contains the following items:

ACT-IR224UN-Lx / [ACT-IR224UN-Lx-LE](#) USB to Serial SIR Adapter x1

Installation CD x1, which includes:

- a. Device driver installer
- b. User's Manual.
- c. Quick Start Guide

## 4. SPECIAL NOTICE & SYSTEM REQUIREMENT

### 4.1 Special Notice

#### 4.1.1. Timing of COM Port Closing

ACT-IR224UN-Lx / [ACT-IR224UN-Lx-LE](#) uses DTR and RTS signals to configure IR communication speed and has 256 bytes inbound buffer & 256 bytes outbound buffer. Normally this *Raw IR* transmitting dongle has *no flow control protocol*. So, if the sending side has completed its sending but some data in dongle buffer still pending transmission before you close the COM port, DTR and RTS signal will get change consequently. This will also cause the *baud rate change*. In such a case the receiver will get junk data. To prevent this, we recommend giving some *delay time before closing the port*, which ensures all pending data being sent out completely.

#### 4.1.2. Improve the Throughput

We recommend sending bulk of data rather than byte-by-byte data to achieve good throughput. E.g., send the entire data as a whole, instead of calling the write API one byte at a time. If your data size is too big, then you can send them in multiple blocks.

### 4.2 System Requirement

1. Windows 98/ME/2000 SP4, Win XP SP2/Vista (32 & 64 bit), Win CE, Mac, [Android](#) or Linux. For Windows 7 (32 & 64 bit), please use RC build 7100 or above. Windows Server 2003/2008 (32 & 64 bit).
2. At least 256MB RAM (512MB is recommended).
3. Processor Speed 1.8 GHz.
4. USB 1.1 port (or above).

## 5. FAQ (Frequently Asked Questions)

- **Q1:** When we use this dongle, occasionally at the end of communication, a few bytes show as junk in receiver side. Why? And how to solve?
- **A1:** Please refer to [4.1.1 "Timing of COM Port Closing"](#) in section 4.1 Special Notice.
- **Q2:** How to improve the channel utilization or throughput?
- **A2:** Please refer to [4.1.2 "Improve the Throughput"](#) in section 4.1 Special Notice.
- **Q3:** While un-installing the Driver, Windows prompts to Restart. Do I need to restart the PC?
- **A3:** Yes! We highly recommend restarting the PC so that you can complete the un-installation successfully.

- **Q4:** In some Windows XP, while Un-installing the driver (from “**Add or Remove Programs**”), it is not restarting automatically when I select “Yes” to restart. Why?
- **A4:** We recommend Method 1 in Chapter 10 to un-install the driver. If system still doesn't restart automatically, it is highly recommended to restart manually.
- **Q5:** In Windows Vista, I am getting an “**elevation prompt**” of the **administrator permission** each time I perform any new driver installation/un-installation or running any new application. Why?
- **A5:** Windows Vista/Win 7 have added a new Security Feature called as “**UAC (User Account Control)**”. So, in such OS, if **UAC has been turned on** (refer to [Appendix](#)) then you will get an “**elevation prompt**” of the administrator permission each time you perform any new driver **installation/un-installation** like follows. In that case, Press Allow button and continue your driver installation/un-installation.



In general, with “**Administrator Approval Mode**”, Windows Vista/Win 7 will run most applications with **standard user permissions** even if the user is an **administrator**. If a user wishes to run a program that requires **administrator permissions**, they **must give consent** through a **User Account Control** prompt.

## 6. GENERAL SETUP PROCEDURE – Windows, Mac, Android & Linux

- a) Make sure USB dongle is **NOT plugged** into PC until you have installed the driver.
- b) From “Add or Remove Program” in Control Panel of Win 98/ME/2K/XP, or from “Programs and Features” in Control Panel of Windows Vista /Win 7, check if “**PL-2303 USB-to-Serial**” or “**PL-2303 Vista Driver Installer**” exists. If exists, please **remove it first**.
- c) Insert the installation CD and it will install driver for Windows 98/ME/2K/XP/Vista/Win 7 automatically.
- d) **Manually SETUP under WinCE, Mac, Android or Linux OS:**

*Run SETUP yourself under WinCE, Mac, Android or Linux* since it will **not** autorun for you.

Please direct browse the installation CD to find the path: D:\Driver (assume D:\ is your CD driver). Then select the right folder under it, say “Linux\_RedHat” for example and extract the packaged file for use.

**Note:** Google **Android OS** is also based on Linux kernel actually.

*Linux driver is for RedHat 7.3/8.0/9.0 Only. **No need to install drivers for the followings:***

*Linux Kernel 2.4.10 and above already includes built-in drivers for PL-2303H;*

*Linux Kernel 2.4.31 and above already includes built-in drivers for PL-2303H, PL-2303HxD and PL-2303XA/HXA.*

- e) Sometimes you may find it not AUTORUN in Windows, especially in Vista/Win 7. Make sure the “AUTORUN” option under “**Control Panel=> AUTOPLAY**” has been selected in Vista/Win 7. Otherwise please browse the CD and run  
**ACT-IR224UN-DriverInstaller\_v1210-20100408.exe** manually.
- f) Plug the IR adapter into USB port. It will lead you to a “Found New Hardware” procedure to complete the installation.

## 7. INSTALLATION UNDER WINDOWS

### 7.1 Common Installation Procedure

1. Insert the installation CD. In most cases this should start the installation automatically.

And the first step it will copy the following files to the path:

“C:\Program Files\ACTiSYS\ACT-IR224UN\”

- ACT-IR224UN-Lx / [ACT-IR224UN-Lx-LE](#) Quick Guide & User's Manual.
- ACT-IR224UN-Lx / [ACT-IR224UN-Lx-LE](#) DriverInstaller is copied to the subdirectory named

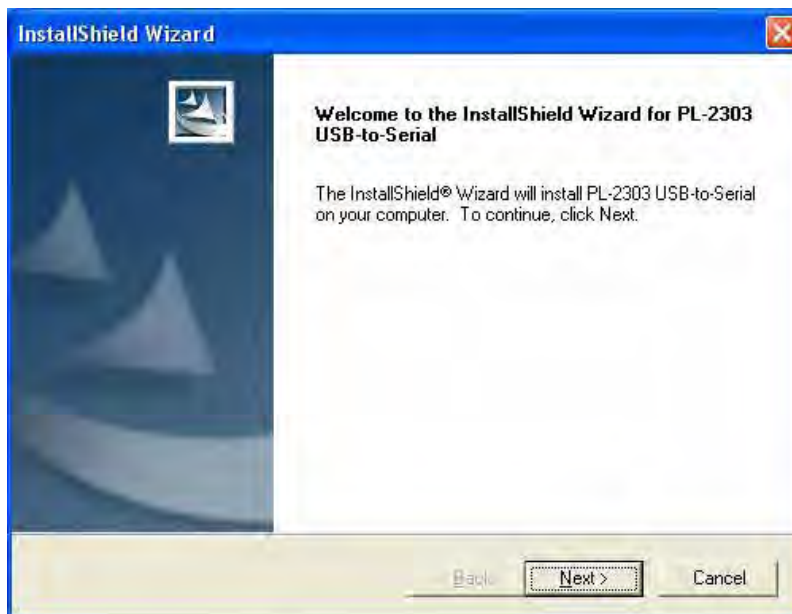
“Driver”.

2. If the installation Does start automatically, go to the next section.
3. Otherwise explore the CD contents
4. Double click “ACT-IR224UN-DriverInstaller\_v1210-20100408.exe” for Windows.

## 7.2 Driver Installation

### 7.2.1 Driver installation for Windows 98/ME/2000/XP

1. After completes the files copy, it will start the driver installation. Then a welcome screen for PL-2303 Driver installer will show up. Click “**Next**” to continue.



2. When this Installation completes, click **“Finish”** to close the Wizard window.



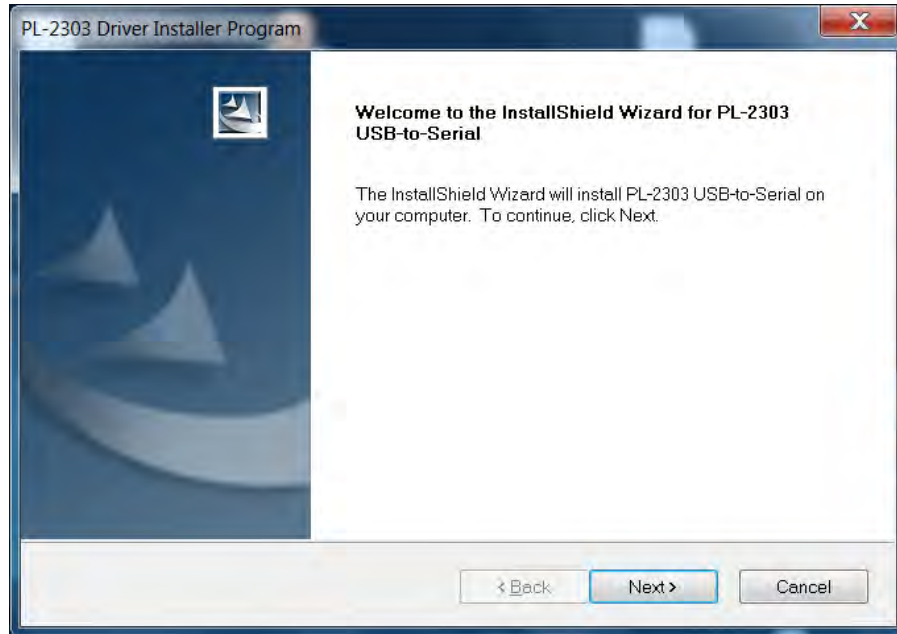
3. Now plug IR adapter to USB port. System will pop up a **“Found New Hardware”** bubble window at the right corner of Tool Bar and display the message: **“Prolific USB-to-Serial Comm Port”** at the first time you plug in.



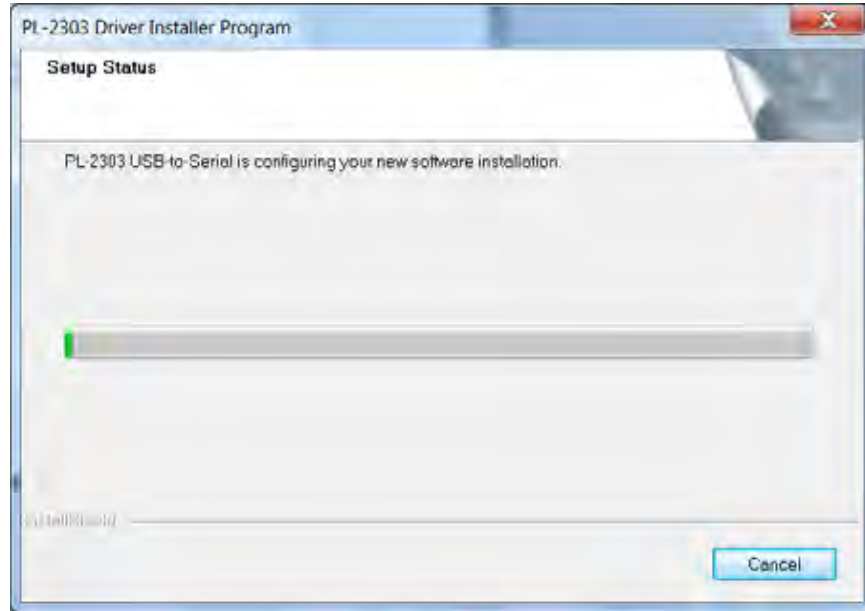
4. This completes the driver installation. Now you can confirm the installation per chapter 9 “Installation Check”.

## 7.2.2 Driver Installation for Windows Vista /Win 7 (32 & 64 bit)

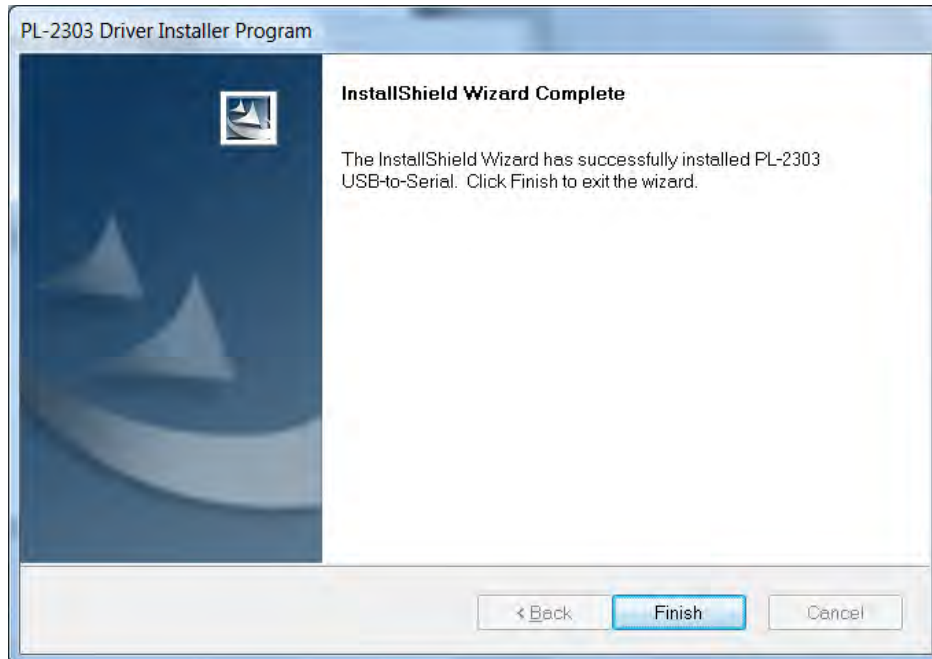
1. After completes the files copy, it will start the driver installation. You may get “elevation prompt” of “(UAC)” if UAC has been turned ON in your Windows Vista OS (see [FAQ](#) for details). Else a welcome screen for PL-2303 Driver installer will show up. Click “Next” to continue.



2. You will see the Vista Driver Installer under processing:



3. When this Installation completes, click “Finish” to close the Wizard window.



5. Now plug IR adapter to USB port. System will pop up a “**Found New Hardware**” bubble window at the right corner of Tool Bar and display the message: “**Prolific USB-to-Serial Comm Port**” the first time you plug in.

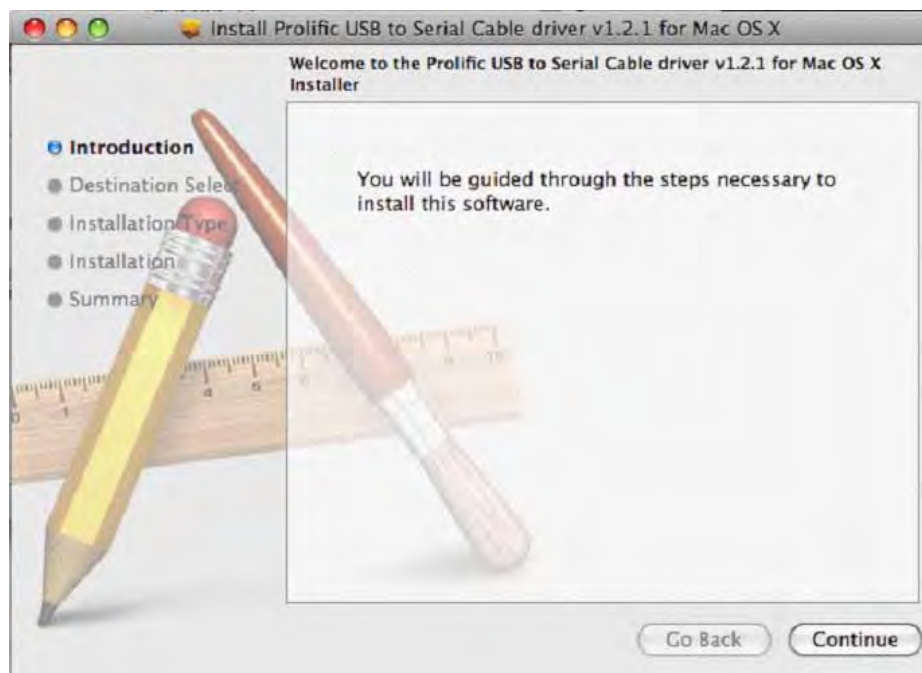
6. This completes the driver installation. Now you can confirm this per [Chapter 9](#) “Installation Check”.

## 8. INSTALLATION UNDER Mac OS

1. Insert the CD into your Mac Machine. It will automatically run the file **PL2303\_1.2.1r2.dmg**.
2. Then you will see the installer file : **PL2303.2.2.1.pkg** as below.
3. Double click the file "**PL2303.2.2.1.pkg**". Then the installation starts.



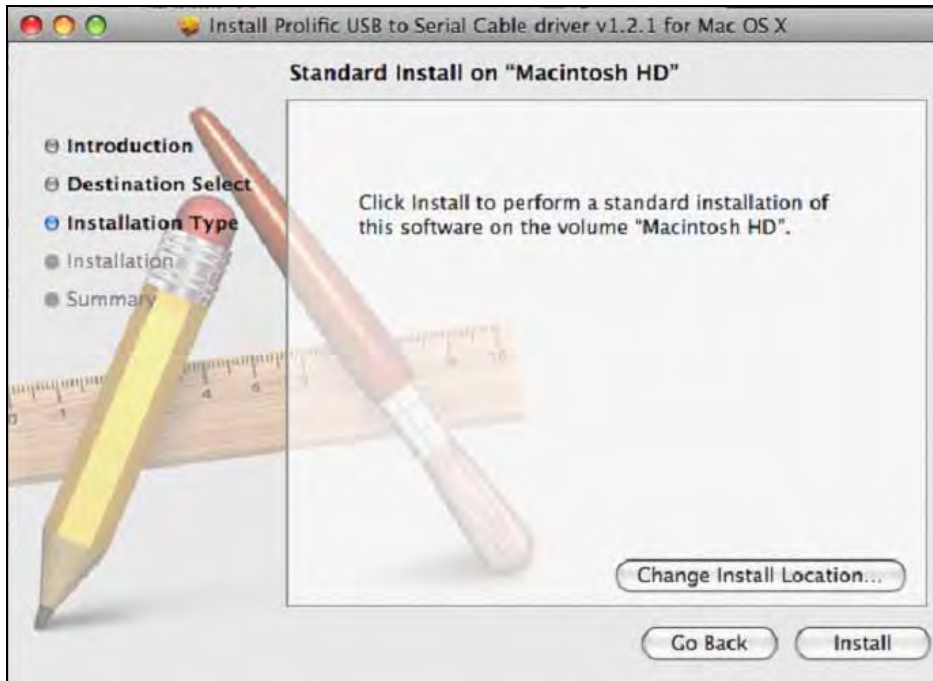
4. You will see the **Welcome** Window as below: Click "**Continue**".



5. After select a Destination, click **“Continue”**.



6. Then click **“Install”** to continue when seeing below window?



7. You will see below window asking you to type your "Name" and "Password" you originally used for logging in to your Mac Machine in case you have set it in your "screen saver" setting. Enter them and click "OK: to continue.

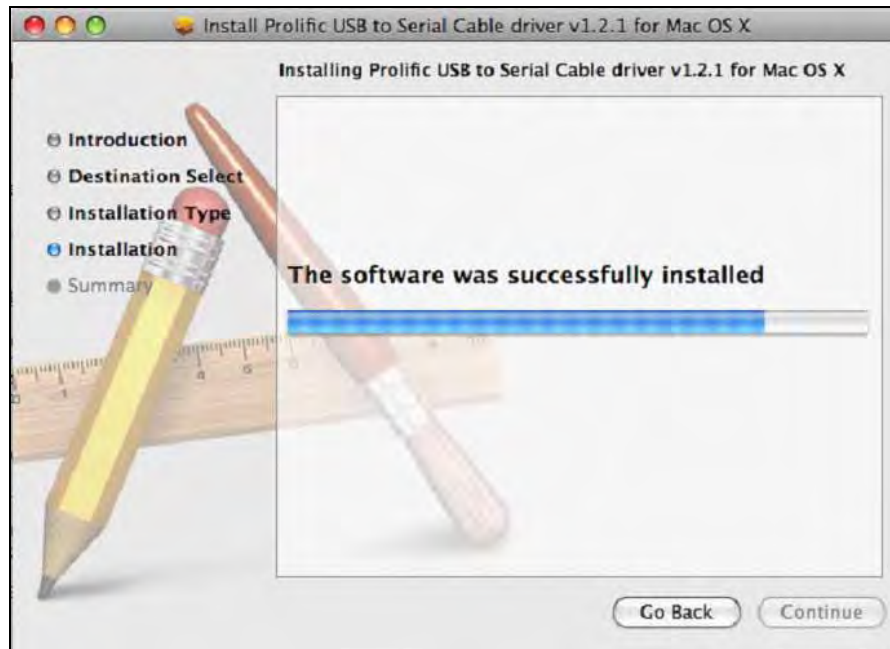


8. You will be asked to confirm the installation as below, click "Continue Installation" to continue.

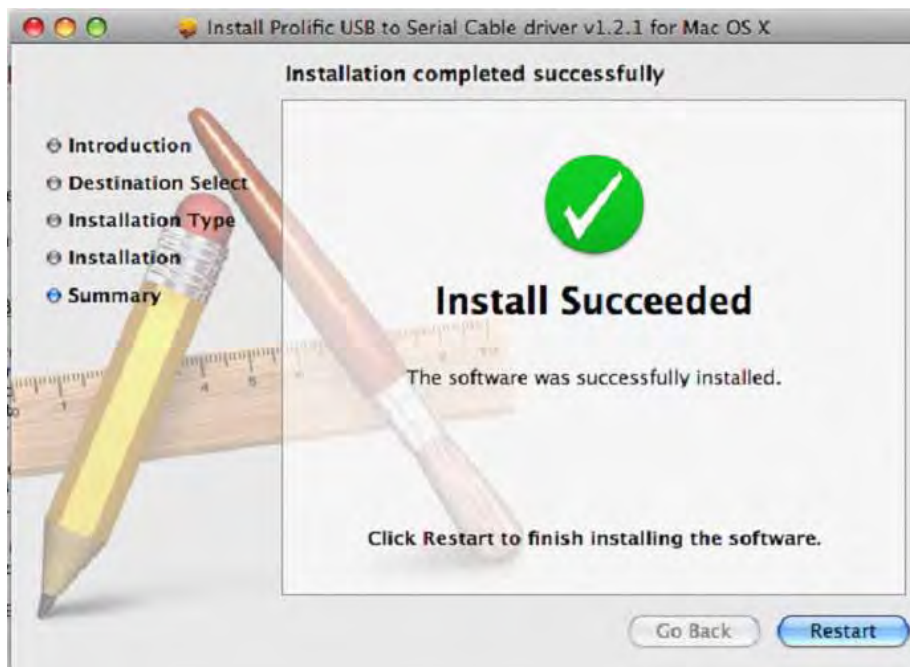


9. You will see the installing window under processing.





10. Then you will see the installation Succeeded as below.  
Click "Restart" to restat your computer and complete the installation.



## 9. INSTALLATION CHECK

### 9.1 Check “Add or Remove Programs” or “Programs and Features” in Windows

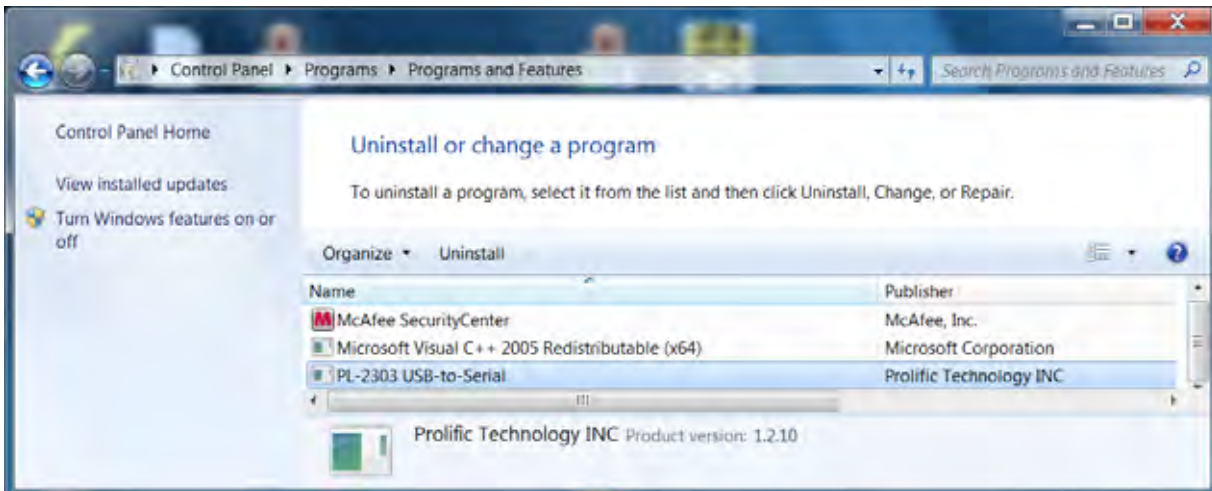
#### 9.1.1 Check Programs in Windows 98/ME/2000/XP

You can open “Add or Remove Programs” window from “Control Panel” in Windows. Check if “PL-2303 USB-to-Serial” is listed as shown below:



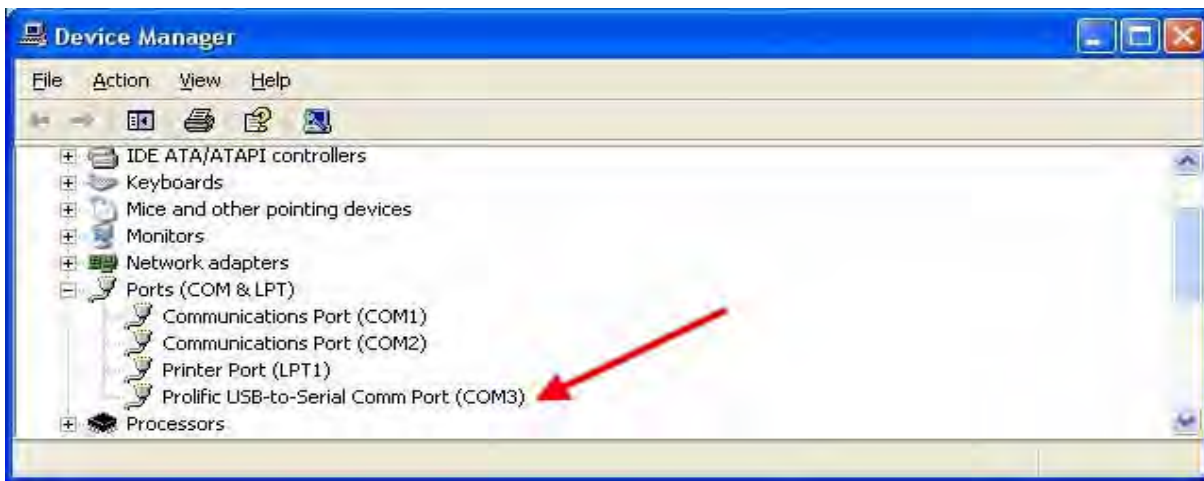
#### 9.1.2 Check Programs in Windows Vista / Win 7

In Windows Vista /Win 7, you can open “Programs and Features” window from “Control Panel” and see “PL-2303 USB-to-Serial” as below.



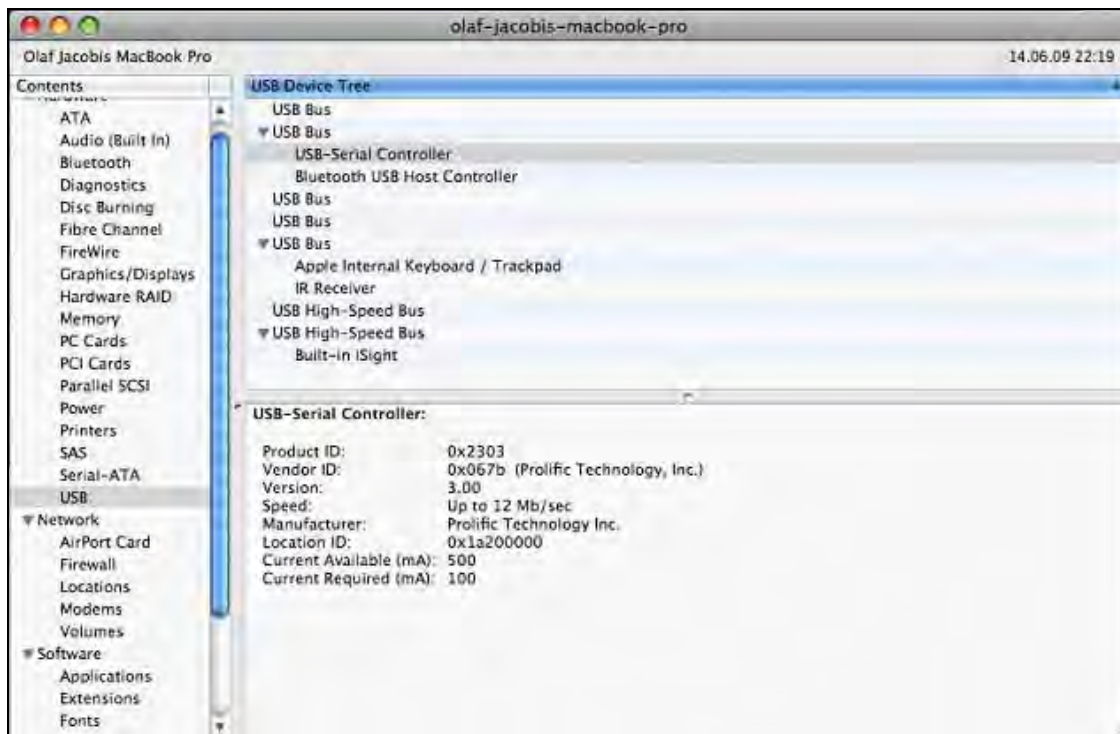
### 9.2 Device Manager Check in Windows

1. You should have plugged IR Dongle to USB Port.
2. To confirm if the installation is successful, you can also open “Device Manager”.
3. You will see the device described as “Prolific USB-to-Serial Comm Port (COMx)” installed under **Ports (COM & LPT)**, where COMx is the COM port number, COM3 for this example. This is the place you can check which virtual COM port this device has been connected. See below.

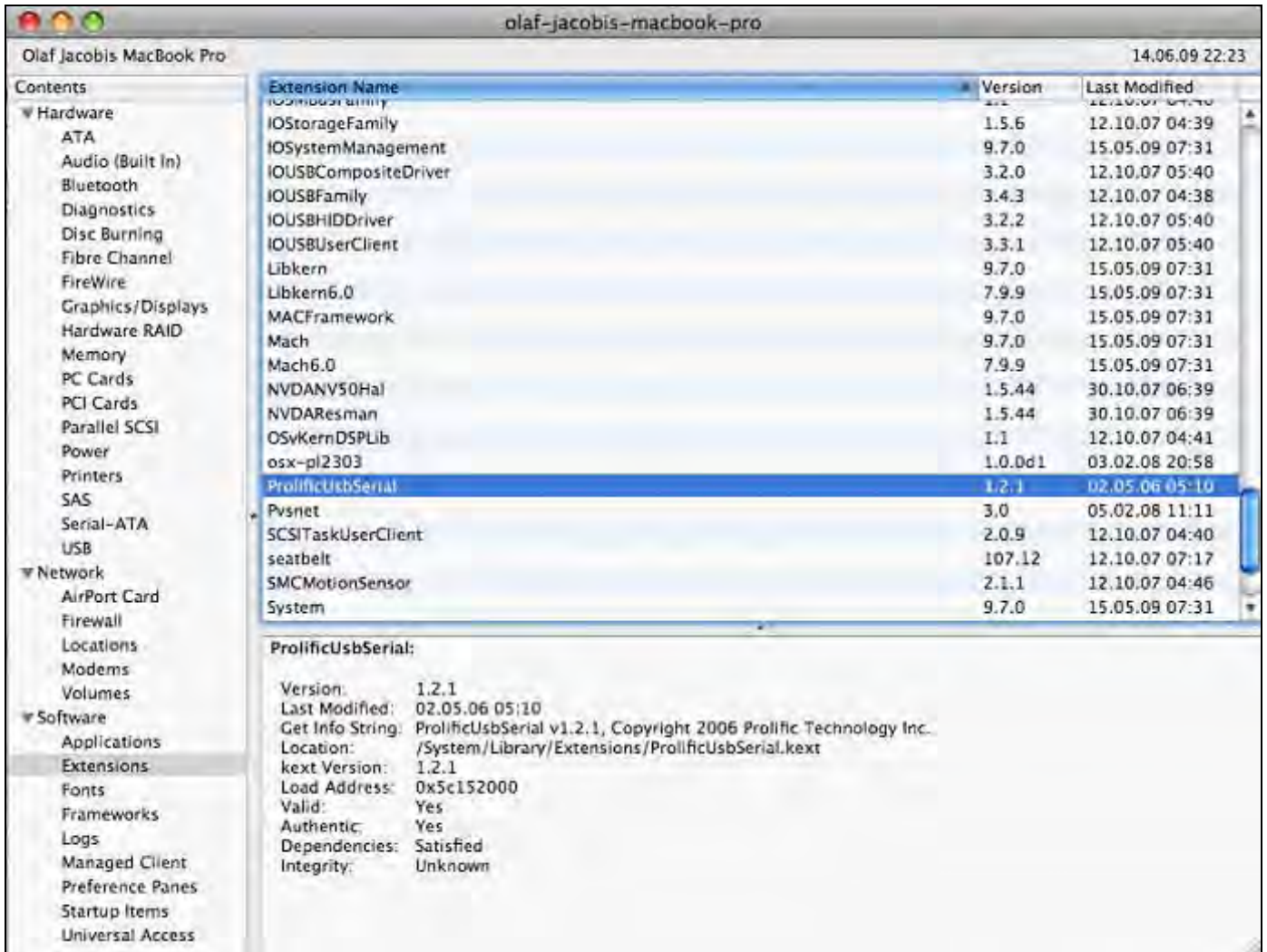


### 9.3 Check from Apple System Profiler in Mac Machine

1. It can be accessed through `/dev/tty.usbserial`.
2. Open the Apple System Profiler (Applications=> Utilities) to check IR dongle connected to USB port.



- This is also the System Profiler showing the Extension loaded to support this IR dongle using the prolific chipset: **"ProlificUsbSerial"**.



- You can also see a device named **"PL2303-xxxxxxx"** is installed by issuing the command (as root!) like below:

```
screen /dev/tty.PL2303-xxxxxxx
```

### 9.4 Android And Linux Based Equipments

- Google Android OS** is actually also based on Linux kernel.
- After you installed the driver or the OS kernel itself has build-in driver, plug in IR dongle to USB port. You will then get a **"ttyusb0"** device

## 10. UN-INSTALL THE DRIVER

**Note:** This un-installation will only remove the Dongle Driver alone. As to all the other files copied to the folder under C:\Program Files\ACTiSYS\ACT-IR224UN\, you have to delete them manually when needed.

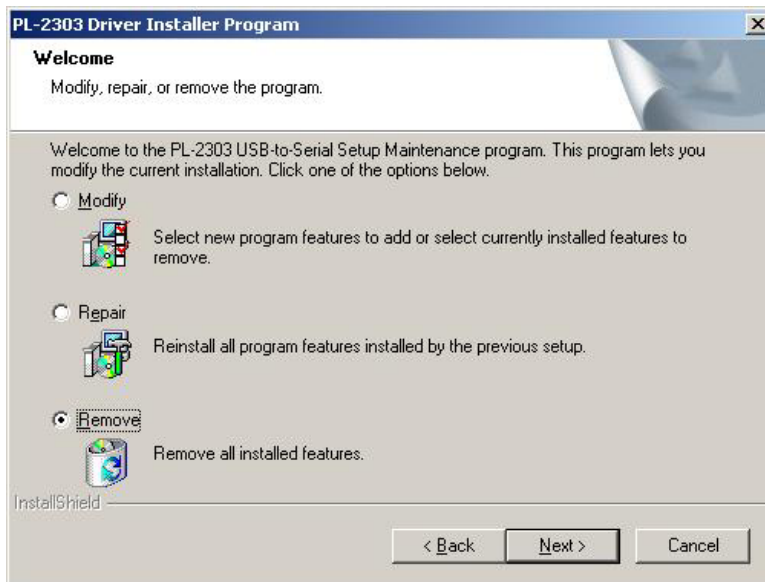
### 10.1 Driver Un-installation For Windows 98/ME/2000/XP

#### 10.1.1 Method 1 - Add or Remove Programs

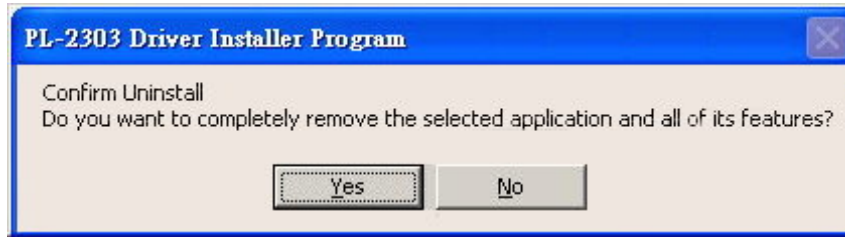
1. Double click “Add or Remove Program” under “Control Panel”.



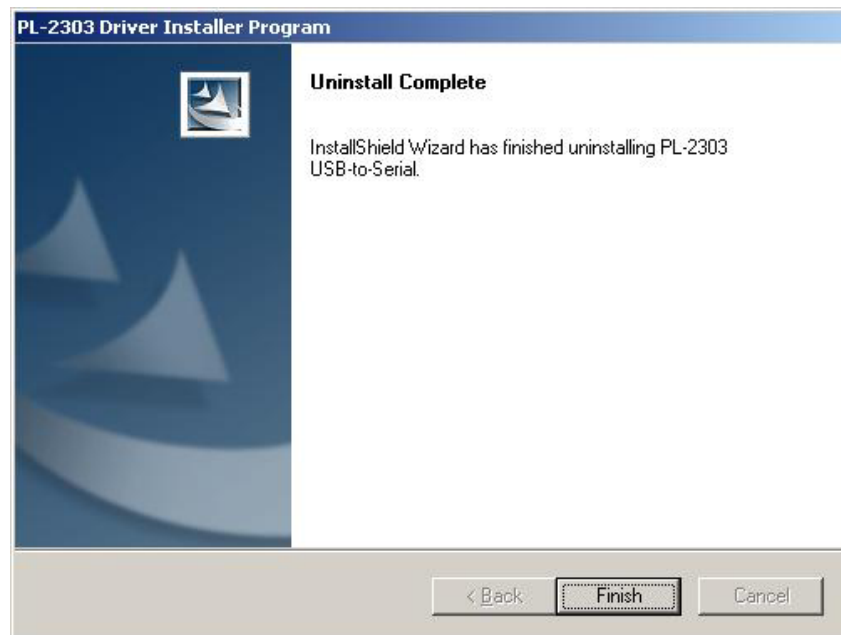
2. Select “PL-2303 USB-to-Serial” and click “Remove” to remove the drivers. It will pop up a Welcome window as below. Select “Remove”, then click “Next>”.



- It will ask you to confirm as below window. Click **“Yes”** to continue.

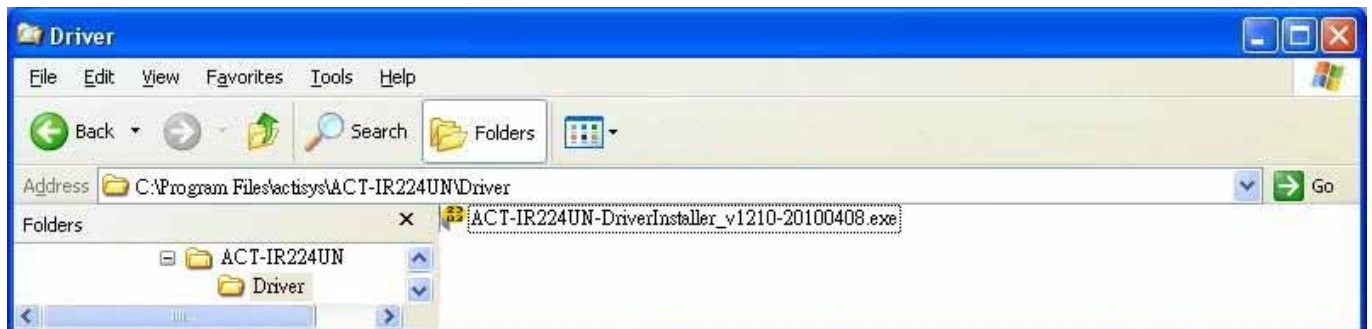


- After seeing **“Uninstall Complete”** window, click **“Finish”** to close the wizard.



### 10.1.2 Method 2 - Driver Installer

- From C:\Program Files\actisys\ACT-IR224UN\Driver, run **“ACT-IR224UN-DriverInstaller\_v1210-20100408.exe”**.



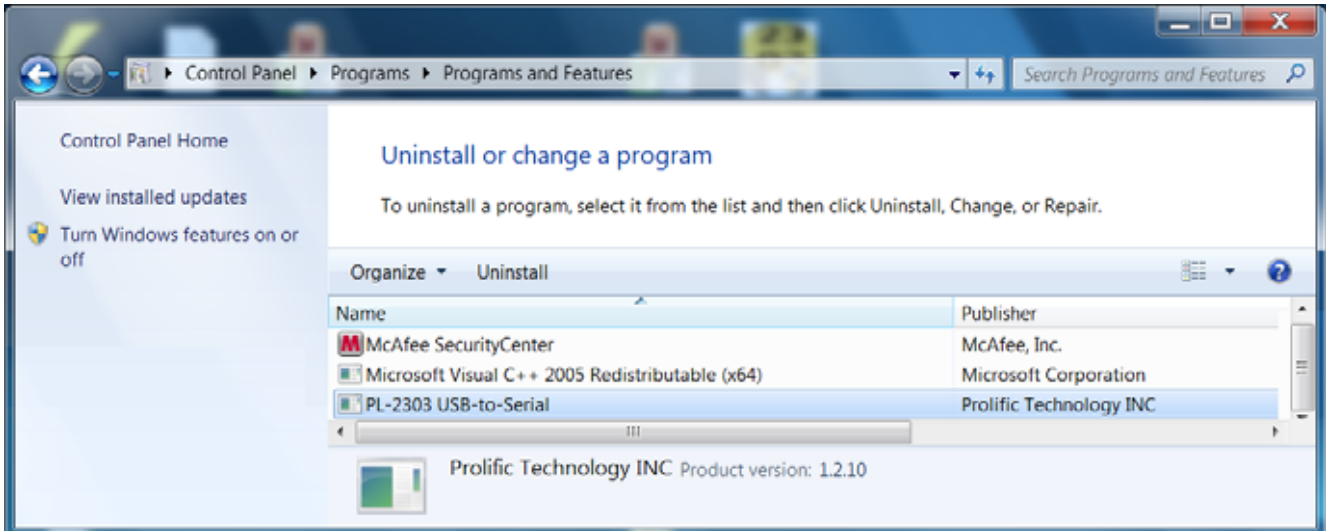
- It will lead you to the same procedure as step 2 to 4 of Method 1.

**Note:** Instead of running above file, if you insert Installation CD the second time, the CD will auto run again and system will then detect the driver installed already and ask you to confirm the same removal procedure.

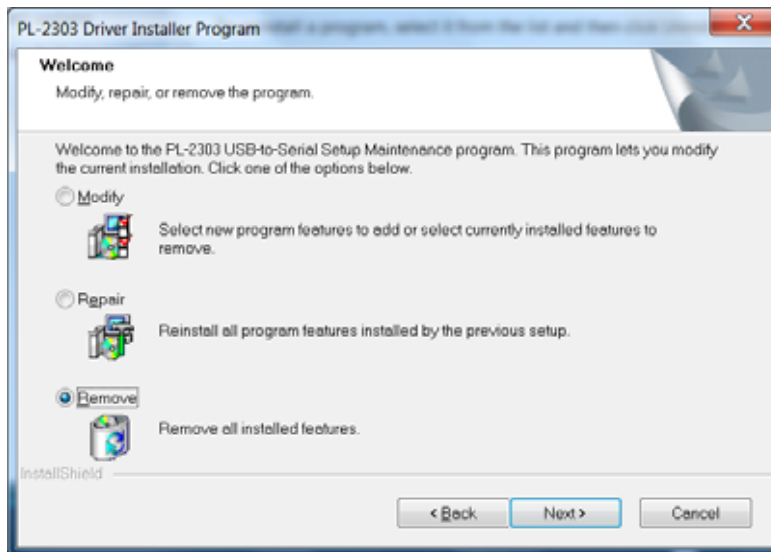
## 10.2 Driver Un-installation For Windows Vista /Win 7 (32 & 64 bits)

### 10.2.1 Method 1 – Programs and Features

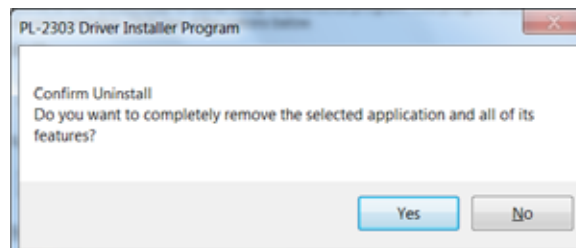
1. Double click “**Programs and Features**” under “**Control Panel**”.



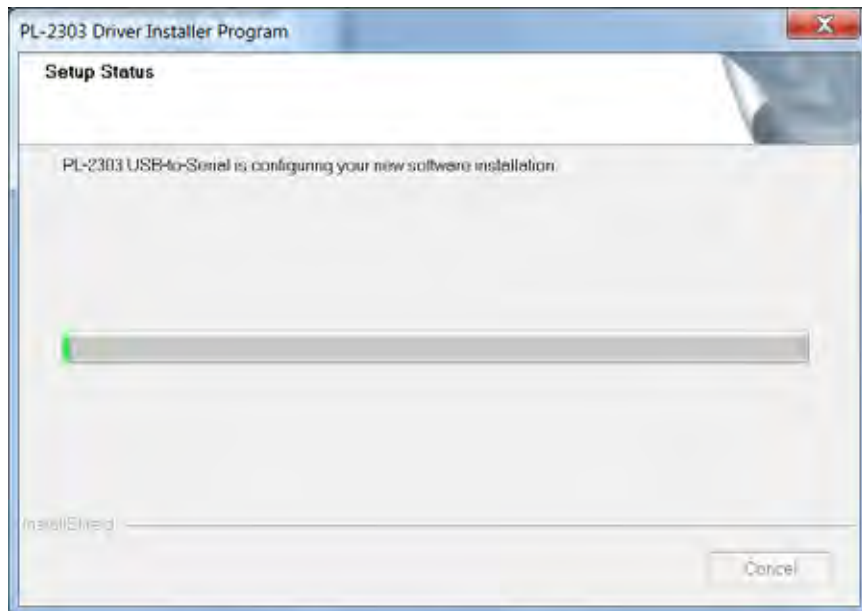
2. Right click on “**PL-2303 USB-to-Serial**” and then click on Uninstall to remove the driver. You may get “elevation prompt” of “(UAC)” if UAC has been turned ON in your Windows Vista/Win 7 OS (see [FAQ](#) for details). Else a **Welcome** window will pop up as follows. Select “**Remove**” and click “**Next>**”.



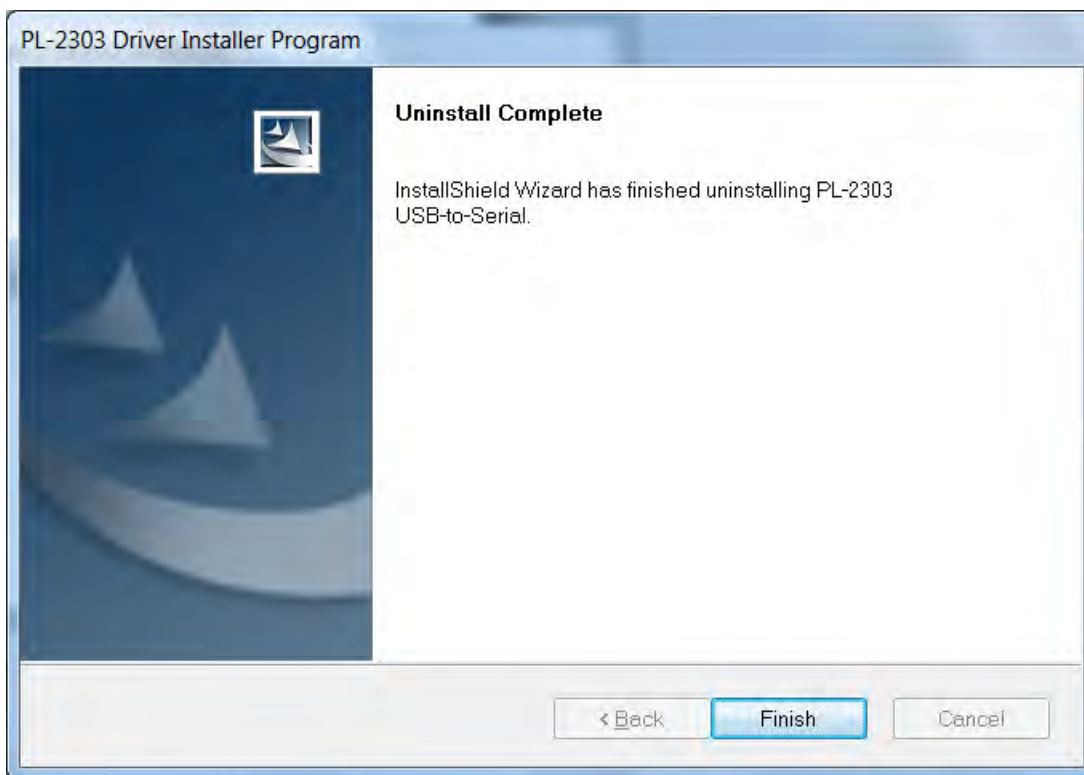
3. Click **Yes** button to continue.



4. Then you will get **Setup Status** window as follows.

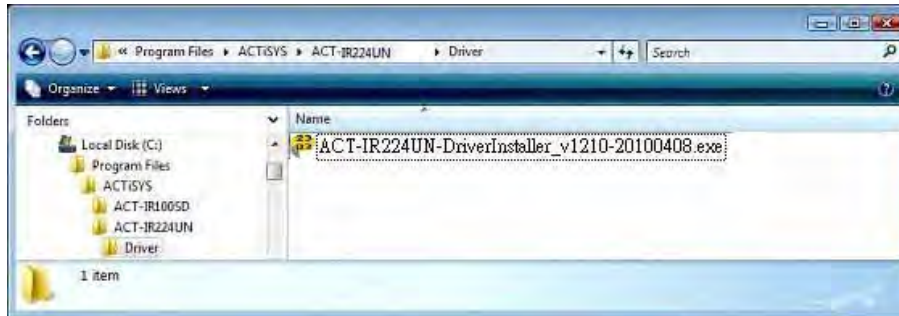


5. Click **Finish** button to complete the Un-installation as below.



### 10.2.2 Method 2 - Driver Installer

1. From C:\Program Files\ACTiSYS\ACT-IR224UN\Driver, run  
“ACT-IR224UN-DriverInstaller\_v1210-20100408.exe”.



You may get “elevation prompt” of “(UAC)” if UAC has been turned ON in your Windows Vista/Win 7 OS (see [FAQ](#) for details). Else it will lead you to the same procedure as Method 1.

2. **Note:** Instead of running above file, if you insert Installation CD the second time, the CD will auto run again and system will then detect the driver already installed and ask you to confirm the same removal procedure.

### 10.3 Driver Uninstallation For Mac

1. Go to terminal
2. key in “cd /system/library/Extension”
3. key in “kextunload ProlificUSBSerial.kext”
4. key in “rm -r ProlificUSBSerial.kext”
5. This should remove the driver from your Mac machine.

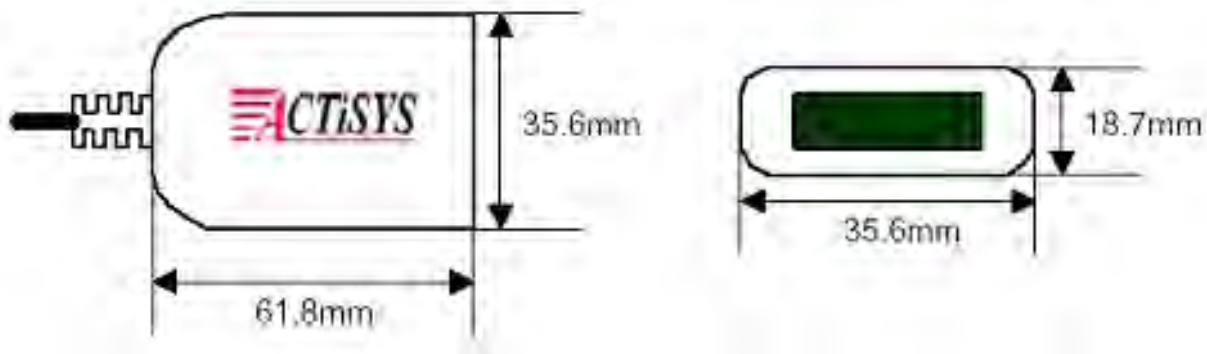
## 11. OPERATION OF IR DONGLE

Establish IR Connection with another PC after confirming the detection of IR dongle as indicated above. Place any other Raw IR device (e.g., ACT-IR220L+). Launch your Communications application like “HyperTerminal” or any other application in the Windows.

## 12. LED BEHAVIOR

Status	Behavior	
	ACT-IR224UN-Lx	ACT-IR224UN-Lx-LE
Power on	LED <b>on</b> for one second	LED <b>off</b> for one second
Standby and receiving	LED <b>off</b>	LED <b>on</b>
Transmitting	Blinks rapidly but weak	

## 13. IR DONGLE DIMENSIONS



Cable Length: 120 cm.

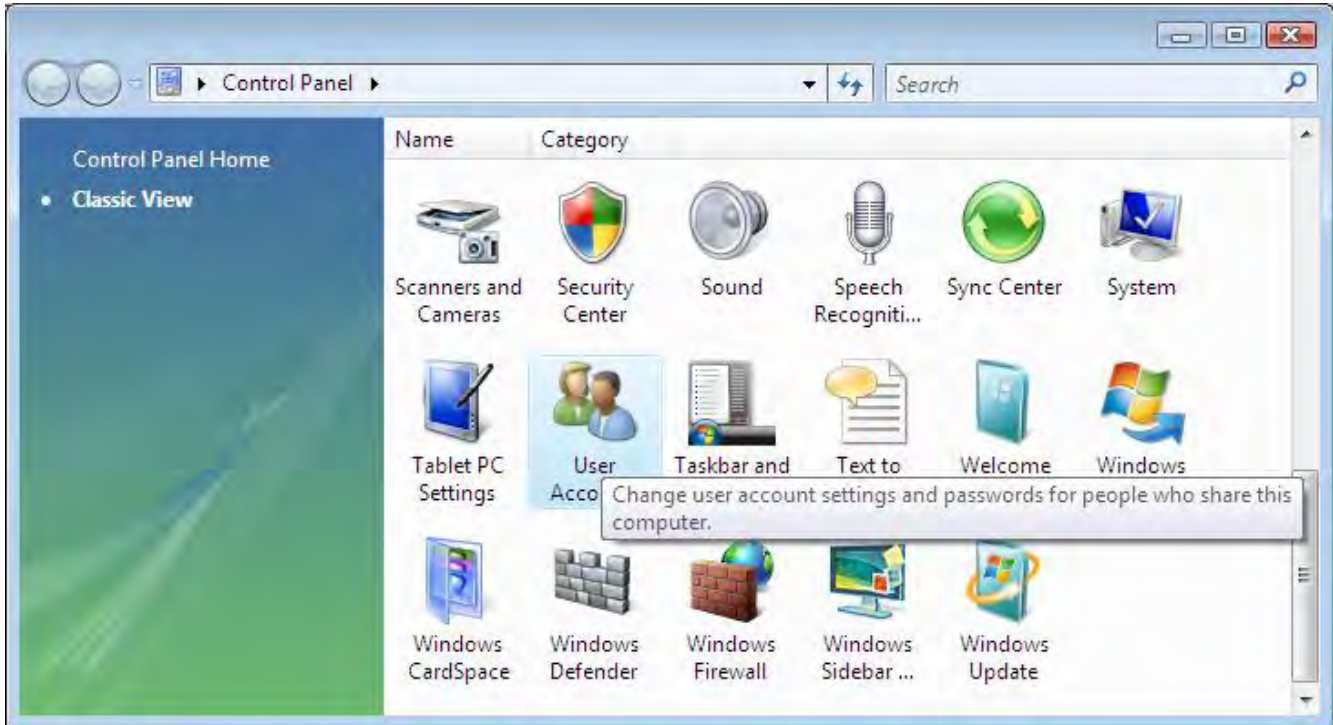
## 14. CHARACTERISTICS AND SPECIFICATION

Parameter	MIN.	TYPICAL	MAX.	Units
DC supply voltage		5.0	5.2	V
Supply voltage, VSS		0		V
Operating temperature range, TA	0		60	
DC current (Ready mode)		15	20	mA
DC current (Active mode)		60	100	mA
Infrared Transmitting range	1	158	200	cm
USB signal threshold level	+4.8	+5V	+5.5	V

## 15. APPENDIX : TURN UAC On/Off in WINDOWS VISTA /WIN 7

### 15.1 Check current UAC (User Account Control) Status

1. Go to Control Panel => **Security Center**

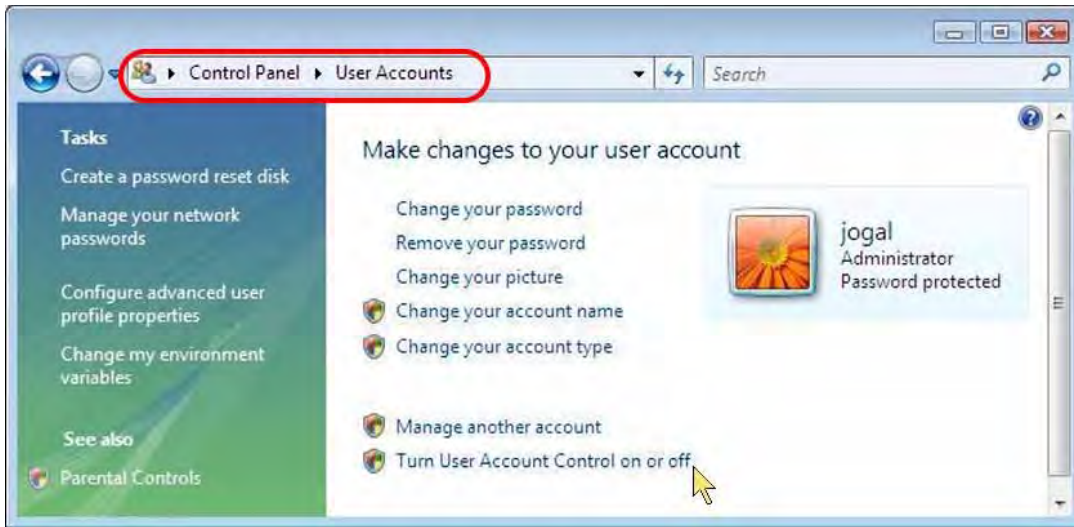


2. You can see current status of UAC (**On** or **Off**) like below:



## 15.2 Turn On / Off UAC

1. Go to Control Panel => User Accounts, you can see below window. Click “Turn User Account Control on or off” button.



2. You can **turn either on (checked) or off (unchecked) UAC** by clicking the following check box as below.



## 16. WARRANTY INFORMATION

ACTiSYS Corporation warrants the first end-user purchaser, for a period of 1 year from the date of purchase, that this wireless interface (The Product) will be free from defective workmanship and materials, and agrees that it will, at its option, either repair the defect or replace the defective Product or part thereof at no charge to the purchaser for parts or for labor.

This warranty does not apply to any appearance items of the Product, any consumable items such as paper, ink ribbon, or batteries supplied with the Product, or to any equipment or any hardware, software, firmware, or peripheral other than the Product. This warranty does not apply to any Product the exterior of which has been damaged or defected, which has been subjected to misuse, abnormal service or handling, or which has been altered or modified in design, construction or interfacing. Tampering with Label Voids Warranty.

In order to enforce the rights under this limited warranty, the purchaser should mail, ship or carry the Product, together with proof of purchase, to ACTiSYS.

The limited warranty described above is in addition to whatever implied warranties may be granted to purchasers by law. To the extent permitted by applicable law, ALL IMPLIED WARRANTIES INCLUDE THE WARRANTIES OF MERCHANT ABILITY AND FITNESS FOR USER ARE LIMITED TO A PERIOD OF 1 YEAR FROM THE DATE OF PURCHASE. Some states do not allow limitations on how long an implied warranty lasts, so the above limitation may not apply to you.

Neither the sales personnel of the seller nor any other person is authorized to make any warranties other than those described above, nor to extend the duration of any warranties beyond the time period described above on behalf of ACTiSYS. Corporation.

The warranties described above shall be the sole and exclusive remedy available to the purchaser. Correction of defects, in the manner and for the period of time described above, shall constitute full satisfaction of all claims, whether based on contract, negligence, strict liability or otherwise. In no event shall ACTiSYS Corporation be liable or in any way responsible, for any damages or defects in the Product which were caused by repair or attempted repairs performed by anyone other than ACTiSYS technician. Nor shall ACTiSYS Corporation be liable or in any way responsible for any incidental or consequential economic or property damage. Some states do not allow the exclusion of incidental or consequential damages, so the above exclusion may not apply to you.



## 17. CONTACT INFORMATION

**GO WIRELESS WITH ACTiSYS IR**

**ACTiSYS**  
*The Wireless Infra-red Expert*

- ◆ IrDA Protocol Software For Portable Devices
- ◆ IrDA Test Software For Hardware Systems
- ◆ IrDA Printer And Computer Adapters

115.2K, 4M and 16M bps

IR2000L

IR220L/L+

IR100M/1000M

The graphic features a central red background with the ACTiSYS logo and tagline. Below the logo is a list of services. In the center, there are three images of IrDA adapters: IR100M/1000M, IR2000L, and IR220L/L+. Surrounding these are various devices connected by red lines, including a printer, a scanner, a mobile phone, a PDA, a laptop, a camera, and a digital camera.

**ACTiSYS Corporation**

**921 Corporate Way**

**Fremont, CA 94539, USA**

**TEL:+1-510-490-8024, FAX:+1-510-623-7268**

**E-Mail: [irda-info@actisys.com](mailto:irda-info@actisys.com)**

**Web: <http://www.actisys.com>**